

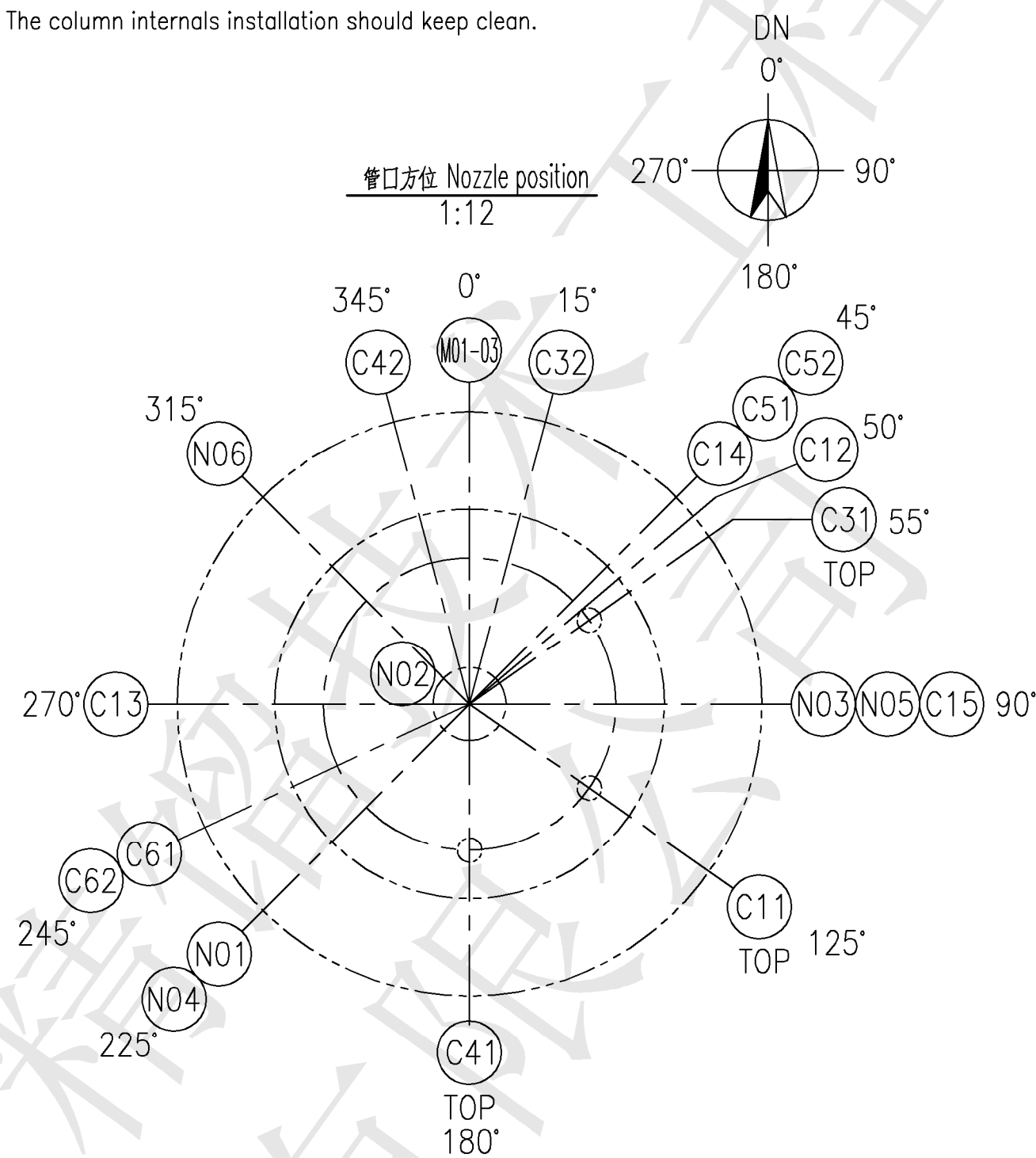


| 管 口 表      |                      | Nozzle schedule            |                 |                               |            |
|------------|----------------------|----------------------------|-----------------|-------------------------------|------------|
| 序号<br>MARK | 公称尺寸<br>NOMINAL SIZE | 用途或名称<br>SERVICE           | 连接面形式<br>FACING | 连接尺寸标准<br>CONNECTION STANDARD | 备注<br>NOTE |
| N01        | 50X80                | 物料入口 INLET                 |                 |                               |            |
| N02        | 150X200              | 气体出口 VAPOR OUTLET          |                 |                               |            |
| N03        | 200X250              | 液体出口 LIQUID OUTLET         |                 |                               |            |
| N04        | 50                   | 回流口 REFUX CONNECTION       |                 |                               |            |
| N05        | 250X350              | 再沸器回流口 REBOILER RETURN     |                 |                               |            |
| N06        | 50X80                | 气体入口 VAPOR INTLET          |                 |                               |            |
| MO1~O3     | 500                  | 人孔 MANHOLE                 |                 |                               |            |
| C11        | 40                   | 温度计接口 TI CONNECTION(W/B)   |                 |                               |            |
| C12~15     | 40                   | 温度计接口 TI CONNECTION(W/B)   |                 |                               |            |
| C31        | 50                   | 远程压力表接口 PI CONNECTION(W/B) |                 |                               |            |
| C32        | 50                   | 远程压力表接口 PI CONNECTION(W/B) |                 |                               |            |
| C41        | 50X80                | 就地压力表接口 PG CONNECTION(W/B) |                 |                               |            |
| C42        | 50X80                | 就地压力表接口 PG CONNECTION(W/B) |                 |                               |            |
| C51~52     | 80                   | 远程液位计接口 LI CONNECTION(W/B) |                 |                               |            |
| C61~62     | 50X80                | 就地液位计接口 LG CONNECTION(W/B) |                 |                               |            |
| E1~13      | 25                   | 蒸汽进口 STEAM INLET           |                 |                               |            |
| F1~13      | 25                   | 蒸汽出口 STEAM OUTLET          |                 |                               |            |

## 技术要求Technical requirements

1. 本图为内件装配图。图中塔壳和与塔体焊接作用点划线表示, 塔内件用粗实线表示。  
The drawing is the internal assembly drawing,  
Full line represents tower internals, and double dot line represents tower and welded parts.
2. 安装规整填料处的塔内壁应磨平, 焊疤、焊渣应清除干净, 其凸起高度应小于3mm。  
The inner wall of the tower installed with regular packing should be ground smooth, the welding scar and welding slag should be cleaned up, and the raised height should be less than 3mm.
3. 规整填料安装时应保证每盘填料水平, 第一盘填料与填料支承捆条方向成45°, 以后各盘填料之间互成90°, 并保持塔内清洁, 不得将碎布、纸片等杂物带入填料层内。  
填料安装完毕后, 用填料压圈适当压紧并调整水平度后打紧锁母。  
While assembly the first block of structured packing and the grid of shall be staggered 45°, and each packing block shall be mutual mistake 90°.  
When installation, the tower internals should be kept clean, and not allowed to take rags and slips in the packing bed.  
After the installation, compress the packing blocks by the packing bed limiter and then tighten the locknuts.
4. 回流分布管安装水平度偏差 $\leq 1\text{mm}$ 。  
The horizontal deviation of Reflux distribution pipe must be  $\leq 1\text{mm}$ .
5. 槽式液体分布器水平度偏差 $\leq 1\text{mm}$ 。  
The horizontal deviation of Rough Liquid Distributor must be  $\leq 1\text{mm}$ .
6. 填料支承(一)安装水平度偏差 $\leq 1\text{mm}$ 。  
The horizontal deviation of bed support (1) must be  $\leq 1\text{mm}$ .
7. 进料分布管安装水平度偏差 $\leq 2\text{mm}$ 。  
The horizontal deviation of Feed distribution pipe must be  $\leq 2\text{mm}$ .
8. 带收集槽式液体分布器水平度偏差 $\leq 2\text{mm}$ 。  
The horizontal deviation of Liquid distributor with collection tank must be  $\leq 2\text{mm}$ .
9. 填料压圈安装水平度偏差 $\leq 2\text{mm}$ 。  
The horizontal deviation of Hold-down grid must be  $\leq 2\text{mm}$ .
10. 填料支承(二)安装水平度偏差 $\leq 2\text{mm}$ 。  
The horizontal deviation of bed support (2) must be  $\leq 2\text{mm}$ .
11. 气相分布管安装水平度偏差 $\leq 2\text{mm}$ 。  
The horizontal deviation of Gas Feed Pipe must be  $\leq 2\text{mm}$ .
12. 未注明焊缝均为连续角焊缝且焊脚尺寸为两相焊件中较薄件的厚度。  
All welding line is continuous weld unless specifying. And leg height is the thinner one's.
13. 塔内件焊接制造。安装要求详见部件图。  
Tower internals are produced and installed in according with part drawings.
14. 施工过程中应有严格的防火措施。  
During the installation, effective fire prevention measurements must be taken
15. 未注明管口详见设计院图纸。  
The position of all the instrument port should be according to design drawing unless .
16. 所有部件出厂前需做明确标识。  
All parts must be done with clear identification.
17. 图中  处表示由施工单位现场焊接。  
 means welded by construction unit in the filed sit.
18. 安装时保持塔内清洁, 不得将碎布、纸片等杂物带入。  
The column internals installation should keep clean.



|                    |                                       |  |                    |                                     |              |                             |
|--------------------|---------------------------------------|--|--------------------|-------------------------------------|--------------|-----------------------------|
| 13-0               | P025-042/B1-06                        | 气相分布管<br>Gas Read Pipe                               | 1                  | 组合件Assembly parts                   | S31603       |                             |
| 12-0               | P025-042/B1-04                        | 管束密封式液体分配器<br>Liquid distributor with O-ring (1)     | 1                  | 组合件Assembly parts                   | S31603       |                             |
| 11-0               | P025-042/B1-05                        | 液体支撑 (2)<br>Liquid Support (2)                       | 2                  | 组合件Assembly parts                   | S31603       |                             |
| 10                 |                                       | 聚苯乙烯<br>Structured packing                           | 7.5m <sup>3</sup>  | MG7.0                               | S31603       |                             |
| 9-0                |                                       | 聚苯乙烯<br>Structured packing                           | 0.45m <sup>3</sup> | ZUPAC4.0                            | S31603       |                             |
| 8-0                | P025-042/B1-05                        | 液体压扁<br>Hold-down ring                               | 2                  | 组合件Assembly parts                   | S31603       |                             |
| 7-0                | P025-042/B1-04                        | 管束密封式液体分配器 (1)<br>Liquid distributor with O-ring (1) | 1                  | 组合件Assembly parts                   | S31603       |                             |
| 6-0                | P025-042/B1-03                        | 进料分配管<br>Feed distribution pipe                      | 1                  | 组合件Assembly parts                   | S31603       |                             |
| 5-0                | P025-042/B1-03                        | 液体支撑 (1)<br>Liquid Support (1)                       | 1                  | 组合件Assembly parts                   | S31603       |                             |
| 4                  |                                       | 聚苯乙烯<br>Structured packing                           | 2.2m <sup>3</sup>  | MG7.0                               | S31603       |                             |
| 3                  |                                       | 聚苯乙烯<br>Structured packing                           | 0.1m <sup>3</sup>  | ZUPAC4.0                            | S31603       |                             |
| 2-0                | P025-042/B1-03                        | 液体分配器<br>Liquid distributor                          | 1                  | 组合件Assembly parts                   | S31603       |                             |
| 1-0                | P025-042/B1-01                        | 回流分配管<br>Reflex distribution pipe                    | 1                  | 组合件Assembly parts                   | S31603       | 全范围<br>total 100% full-grid |
| 件号<br>piece number | 图号或标准号<br>drawing no. or standard no. | 名称<br>name   | 数量<br>quantity     | 规格及材料<br>specification and material | 备注<br>remark |                             |



北洋国家精馏技术工程发展有限公司  
Bei-yang National Distillation Technology Corporation Limited

|      |    |    |                   |
|------|----|----|-------------------|
| 0005 | 06 | 09 | 向日本、中国、美国、俄罗斯等国出口 |
|------|----|----|-------------------|

|     |            |                                      |
|-----|------------|--------------------------------------|
| 潘晓琦 | 2025.06.03 | 印尼PON 3 万吨/年新戊二醇项目                   |
| 郭彬  | 2025.06.03 | Indonesia PON 30,000 TPA NPG PROJECT |

|     |            |  |            |
|-----|------------|--|------------|
| 许力强 | 2025.06.03 | 醛回收塔内件装配图(T-2201)(DN800/1200)                        | 设计阶段 Phase |
|     |            | Internal Assembly drawing of Aldehyde recovery tower | 比例 Ratio   |

|  |   |    |       |
|--|---|----|-------|
|  | Internal Assembly drawing of Ardenlyde recovery tower | 见内 | Ratio |
|  |   | 见内 | Ratio |

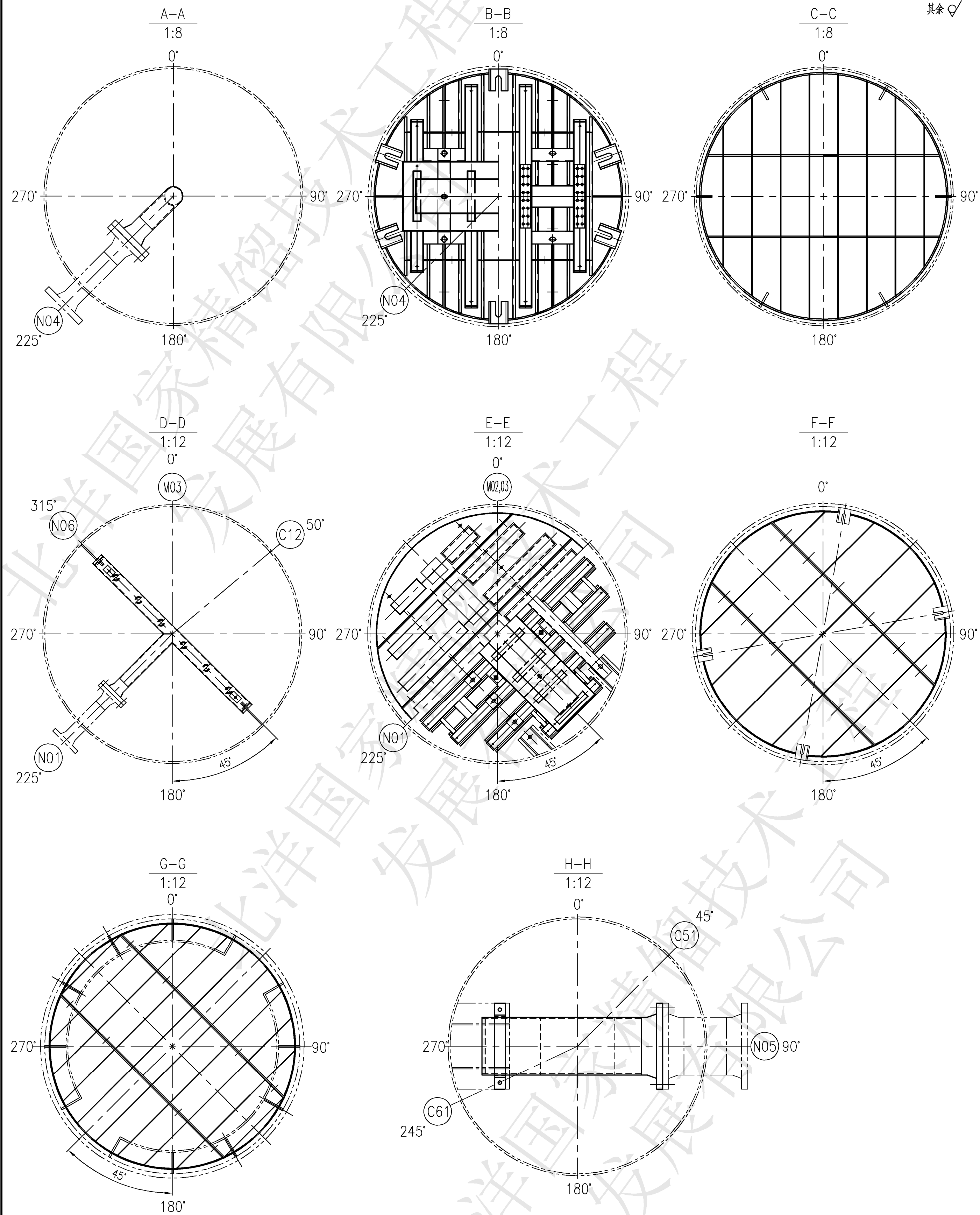
|                  |                          |              |
|------------------|--------------------------|--------------|
| PYD25-171/25-042 | PYD25-042/B1(第一页)(page1) | 总重Weight(kg) |
|                  |                          | 第 1 页 Page1  |

|                  |     |           |
|------------------|-----|-----------|
| △                |     |           |
| △                | 3   | 2025.06.0 |
| △                |     |           |
| △                |     |           |
| 修改标记<br>REVISONS |     |           |
|                  | 版 次 | 日 期       |

|   |                  |            |   |
|---|------------------|------------|---|
| Po-iyang National Distillation Technology Corporation Limited |                  |            |   |
| 设计 design   | 潘晓斌              | 2025.06.03 | 印尼PON 3 万吨/年新戊二酸项目  |
| 校核 check  | 郑彬               | 2025.06.03 | Indonesia PON 3, 30,000 TPA NPG PROJECT                         |
| 审核 review   | 许力捷              | 2025.06.03 | 醒酒器塔内件设计图 (I-2201) (CW800/1200)                                 |
| 工艺 technology   |                  |            | Internal assembly drawing of Alderale recovery tower            |
| 项目编号<br>project NO.   | PYD25-171-25-042 |            | 设计规格 Phase 比例 Ratio<br>总高 Height (kg)<br>第 1 页 Page 共 8 页 Total |
|   |                  |            | PYD25-042/B11(第 1 页) (page 1)                                   |



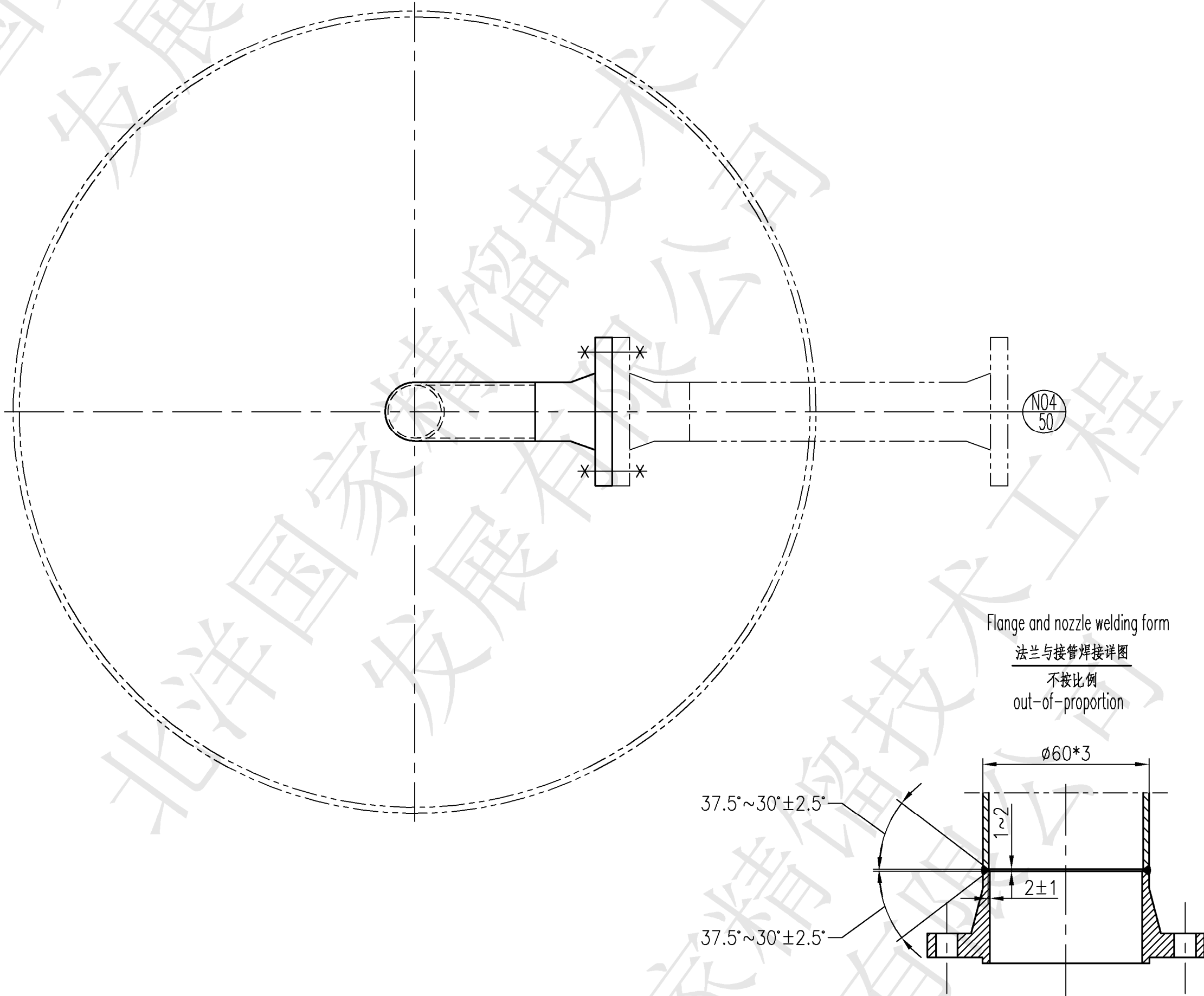
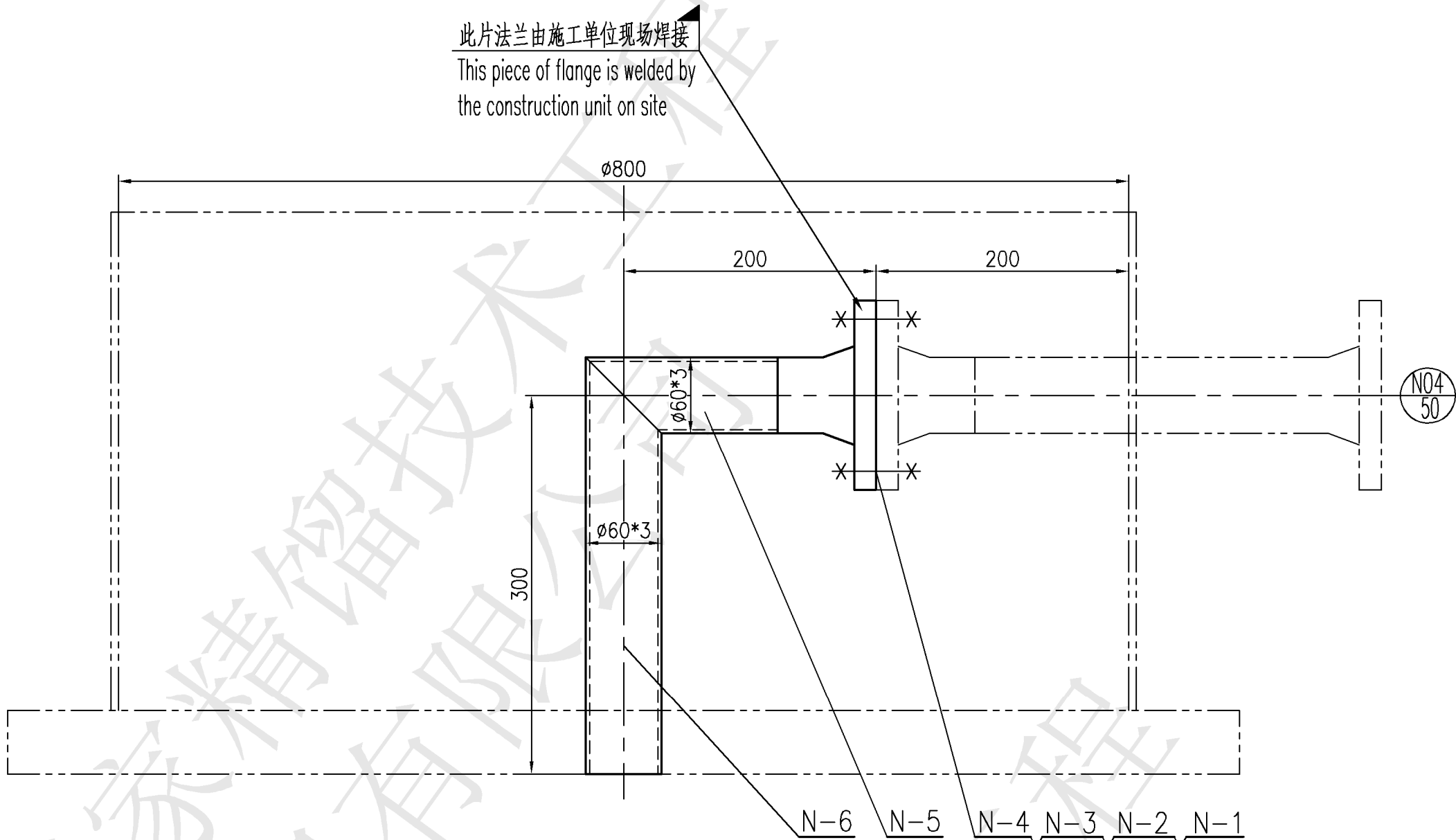
冲(钻)孔  $\frac{12.5}{25}$   
切边  $\frac{25}{25}$   
其余  $\frac{25}{25}$



|   |                  |                          |  |                          |
|---|------------------|--------------------------|--|--------------------------|
| <div><div></div><div>北洋国家精馏技术工程发展有限公司</div><div>Pei-yang National Distillation Technology Corporation Limited</div></div> |                  |                          |  |                          |
| 设计design  | 潘晓琦              | 2025.06.03               | 印尼PON 3 万吨/年新戊二醇项目                                   |                          |
| 校对check   | 郭彬               | 2025.06.03               | Indonesia PON 30,000 TPA NPG PROJECT                 |                          |
| 审核review  | 许力强              | 2025.06.03               | 醛回收塔内件装配图 (T-2201) (DN800/1200)                      | 设计阶段Phase                |
| 工艺technology  |                  |                          | Internal Assembly drawing of Aldehyde recovery tower | 施工图 construction drawing |
| 项目编号 project NO.  | PYD25-171/25-042 | PYD25-042/B1(第二页)(page2) | 总重Weight (kg)  | 比例 Ratio                 |
|   |                  |                          | 第 2 页 Page2  | 共 8 页 Total8             |



冲(钻)孔 12.5/25  
切边 25  
其余



技术要求 Technical requirements

- 本部件制作应规整，不得扭曲变形。所有部件尖角倒钝，去毛刺。  
This part is made normalizely,not to warp and deform.Trimming all sharp angles.  
Trimming all sharp angles.
- 本部件安装水平度偏差≤1mm。  
The horizontal deviation must be ≤1mm.
- 未注明焊缝均为连续角焊缝，焊脚尺寸为两相焊件中较薄件的厚度，焊后清除焊渣。  
All welding seam shall be continuous weld unless specifying. And leg height is the thinner one's.  
Remove welding slag after welding.
- 法兰按相关标准跨中焊接。  
Flange shall be welded in accordance with relevant standards.
- 图中 处表示由施工单位现场焊接。  
 means welded by construction unit in the filed sit.
- N为装配图中的件号，本图N为1。  
N is No. of Internal drawing, and in this drawing N is 1.

|     |                 |         |            |       |             |        |
|-----|-----------------|---------|------------|-------|-------------|--------|
| N-6 | 接管(二)           | pipe(2) | 1          | ø60*3 | S31603      |        |
| N-5 | 接管(一)           | pipe(1) | 1          | ø60*3 | S31603      |        |
| N-4 | GB/T6170-2015   | 螺母      | nut screw  | 4     | M16         | S31603 |
| N-3 | GB/T5783-2016   | 螺栓      | screw bolt | 4     | M16X70      | S31603 |
| N-2 | HG/T20631-2009  | 缠绕垫     | gasket     | 1     | D50-150     | 5525   |
| N-1 | ASME B16.5-2020 | 法兰      | flange     | 1     | WN50-150 RF | S31603 |

|              |                             |      |        |                            |        |
|--------------|-----------------------------|------|--------|----------------------------|--------|
| 件号           | 图号或标准号                      | 名称   | 数量     | 规格及材料                      | 备注     |
| piece number | drawing no. or standard no. | name | number | specification and material | remark |

|              |       |                          |       |                |                 |                 |              |
|--------------|-------|--------------------------|-------|----------------|-----------------|-----------------|--------------|
| N-0          | 回流分布管 | Reflux distribution pipe | 组合件   | assembly parts | 1 : 4           | PYD25-042/B1-01 | PYD25-042/B1 |
| 件号           | 名 称   | 材 料                      | 比 例   | 所在图号           | 装配图号            |                 |              |
| piece number | name  | material                 | ratio | drawing number | assembly number |                 |              |

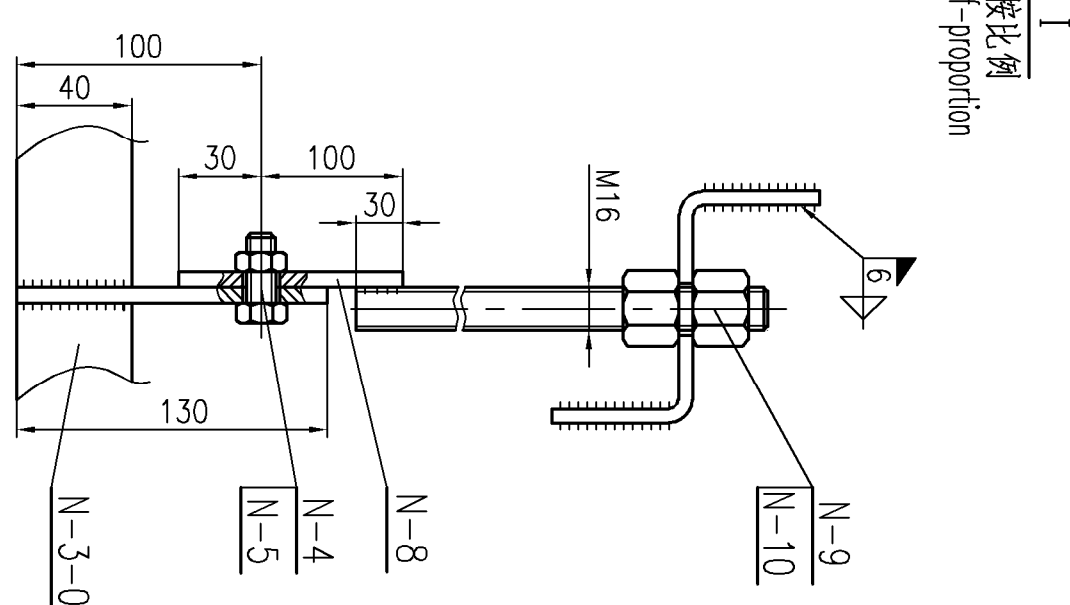
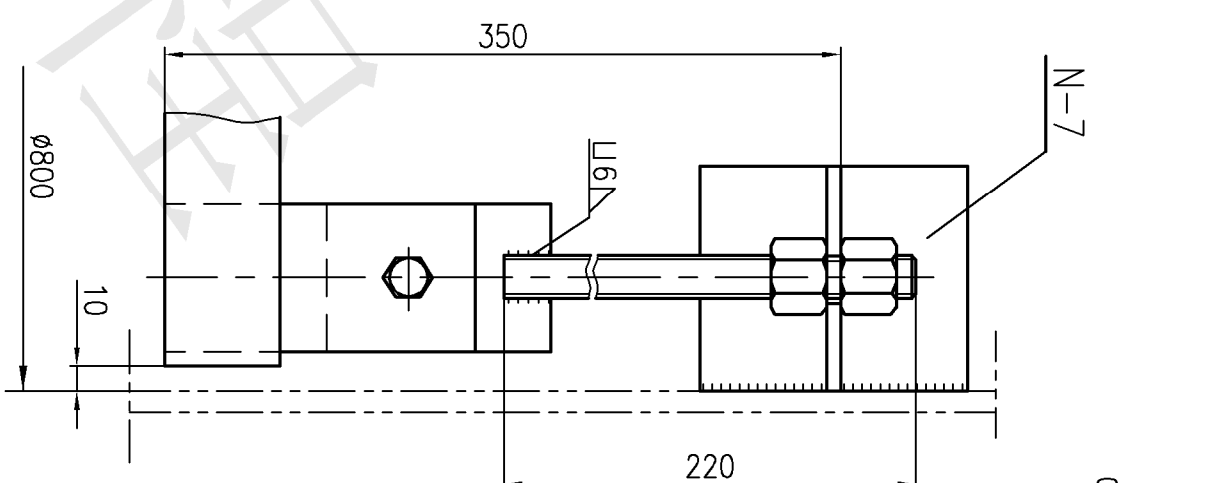
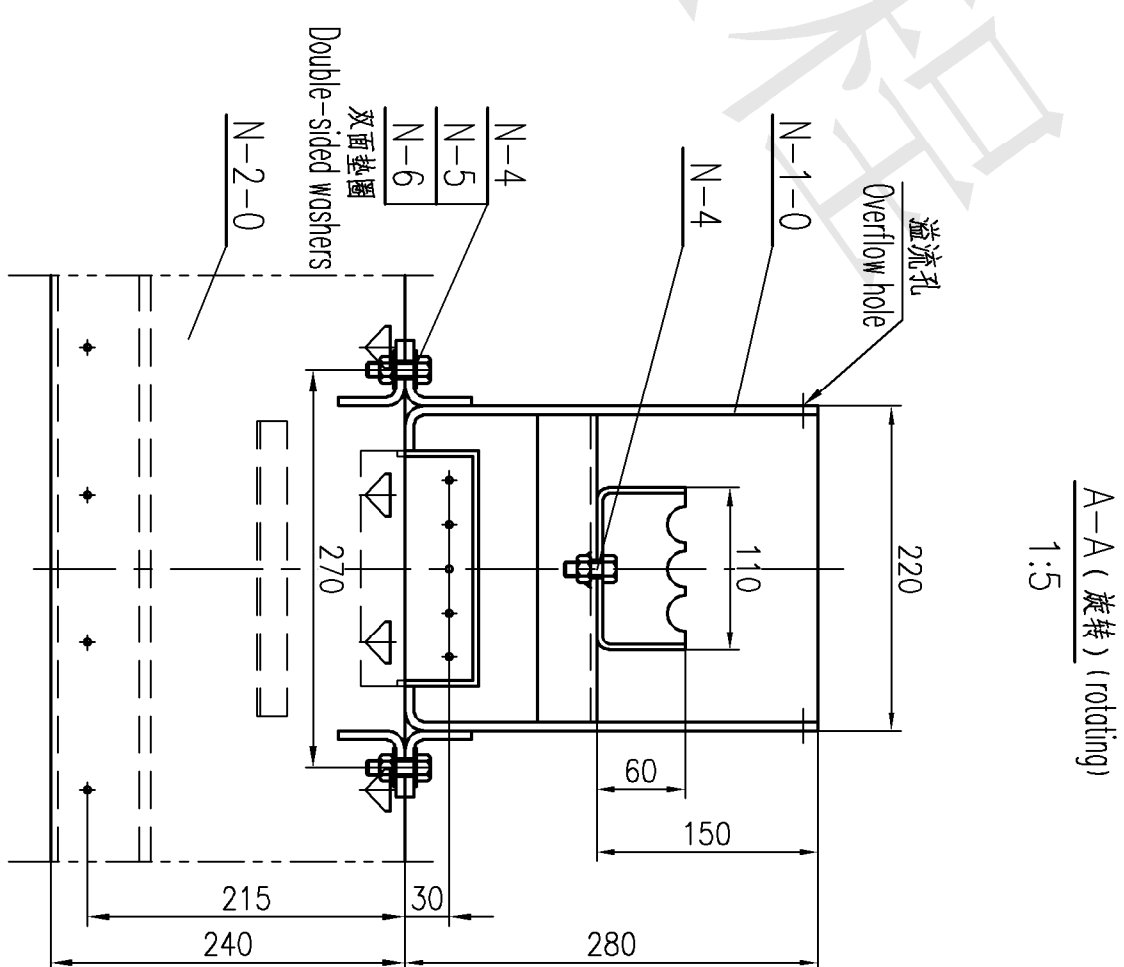
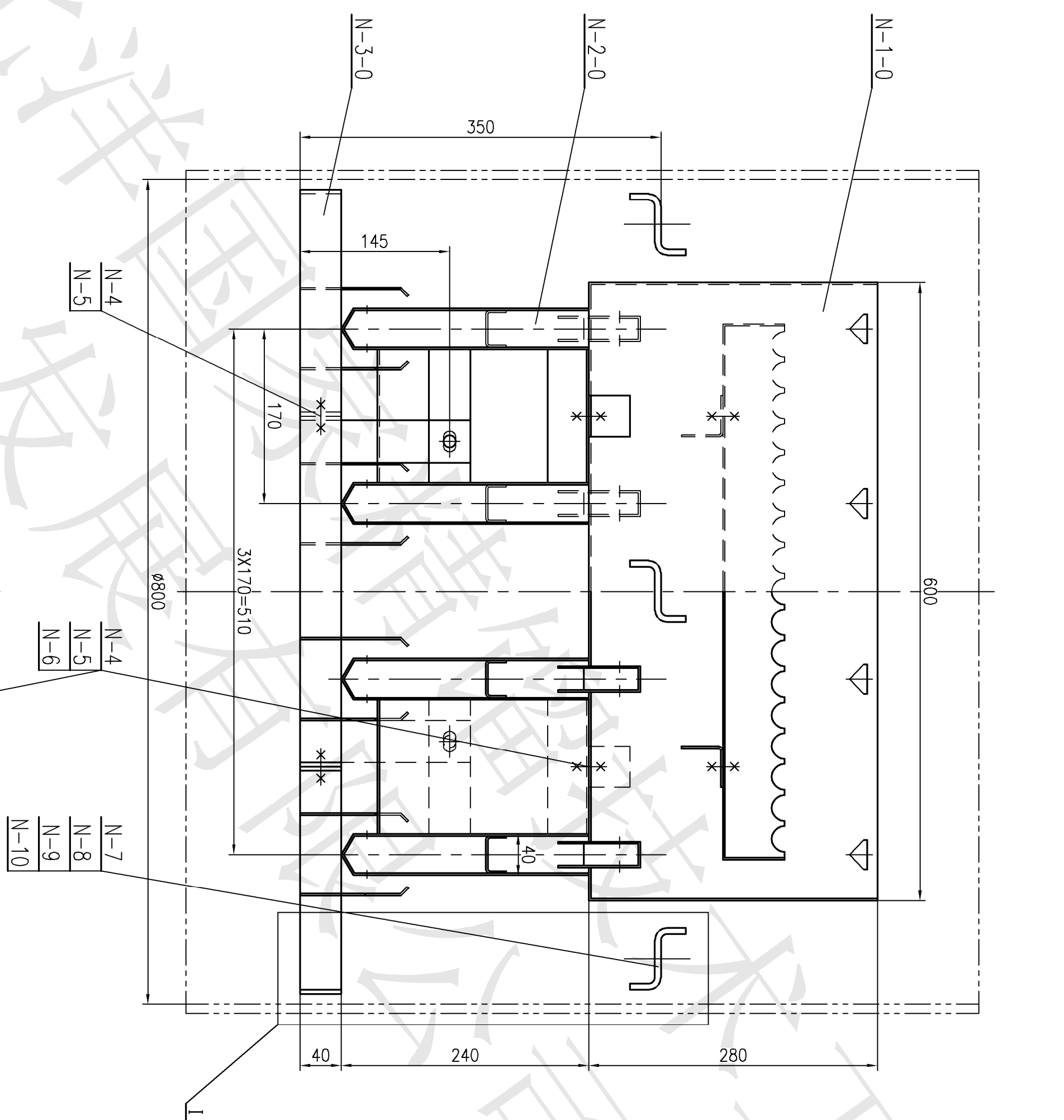


北洋国家精馏技术工程发展有限公司

Pei-yang National Distillation Technology Corporation Limited

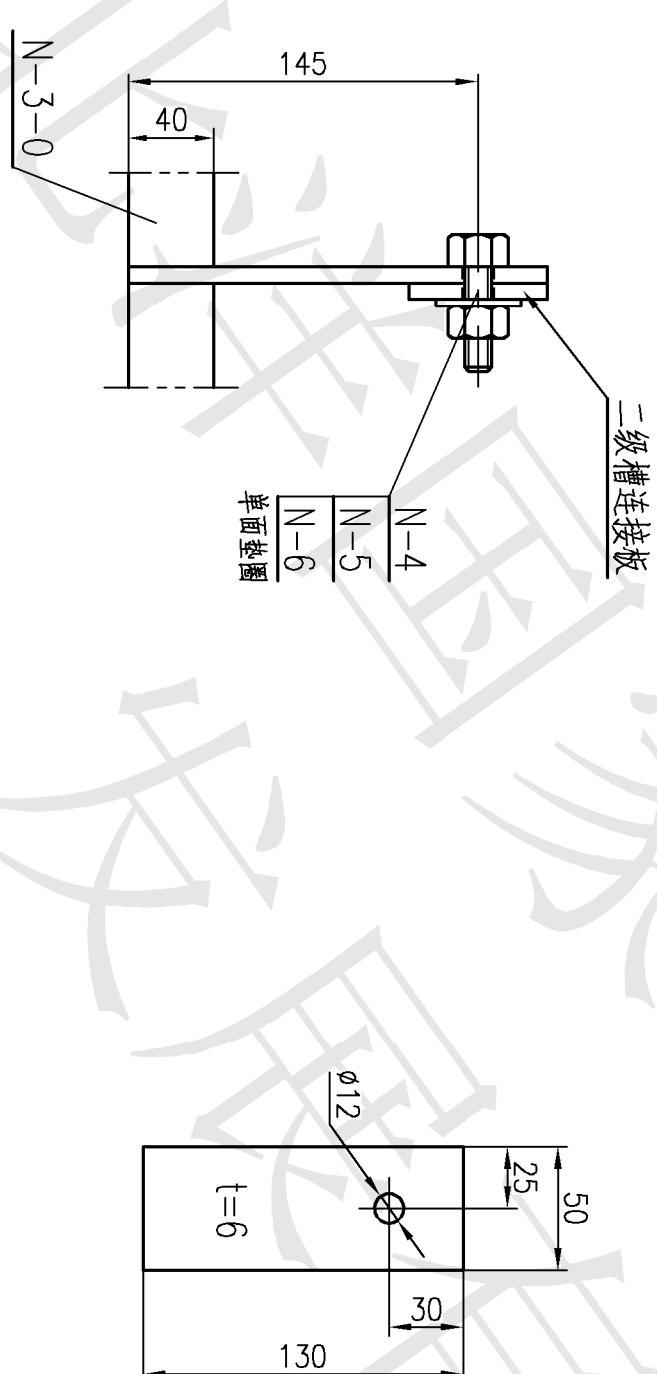
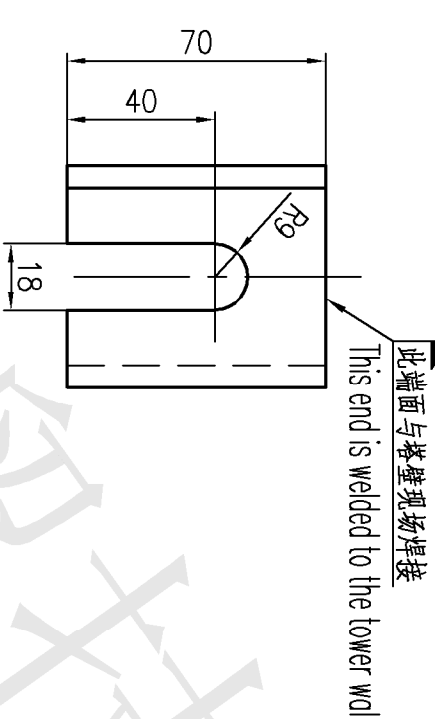
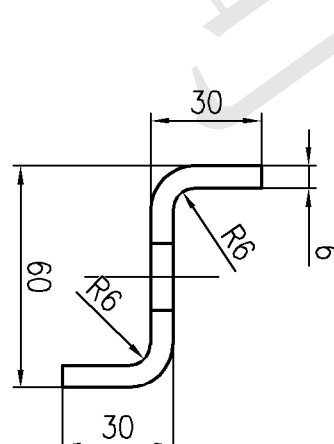
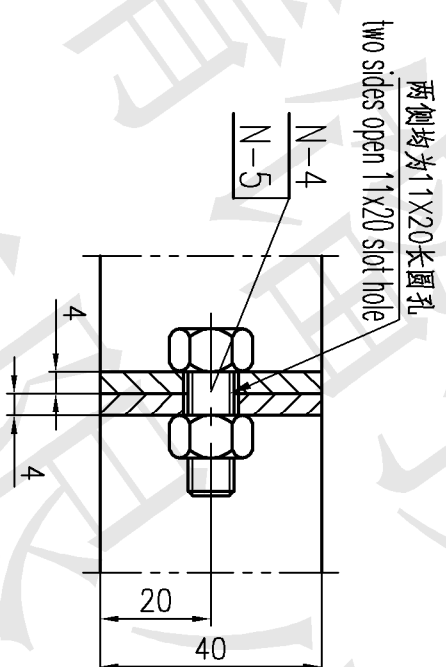
|                 |                  |            |   |               |           |                      |
|-----------------|------------------|------------|---|---------------|-----------|----------------------|
| 设计design        | 潘晓瑞              | 2025.06.03 | 印尼PON 3 万吨/年新戊二醇项目                          |               |           |                      |
| 校对check         | 郭彬               | 2025.06.03 | Indonesia PON 30,000 TPA NPG PROJECT        |               |           |                      |
| 审核review        | 许方强              | 2025.06.03 | 醛回收塔内件部件图(T-2201)(DN800/1200)               | 设计阶段Phase     | 施工图       | construction drawing |
| 工艺technology    |                  |            | Internal drawing of Aldehyde recovery tower | 比例Ratio       |           |                      |
| 项目编号project NO. | PYD25-171/25-042 |            | PYD25-042/B1-01                             | 总重Weight (kg) |           |                      |
|                 |                  |            |   | 第3页Page3      | 共8页Total8 |                      |






### 技术要求 Technical requirements

1. 本部件制作应规范，不得扭曲变形。  
This part is made normozically, not to warp and deform.
2. 未注明缝均为连续焊接，焊脚尺寸为面板和焊件中被焊件的厚度。  
All welding line is continuous weld unless specified. And leg height is the thinner one's.
3. 所有铆接大角钢侧，去毛刺。  
Trimming all shop angles.
4. 各零部件制造完成后及现场安装前，应进行预组装，合格后再各相关零部件上作安装标记。  
The various parts of the components after construction or before going into the lower positioning location marks on the relevant parts.
5. 分布要求前，应去除土上焊渣及其它杂物，安装后要求分布孔全部通畅。  
Before the installation of the distributor, the dirt welding residue and other debris should be removed and the distribution holes should be guaranteed to be unobstructed after installation.
6. 本部件安装水平度偏差  $\leq 1\text{mm}$ 。  
The horizontal deviation must be less than 1mm.
7. N 为装板图中代号号，本图中 N 为 2。  
N is the part No. of assembly drawing, and in this drawing N is 2.
8. 图中  $\blacktriangleright$  处表示由施工单位现场焊接。  
 $\blacktriangleright$  means welded by construction unit in the field site.

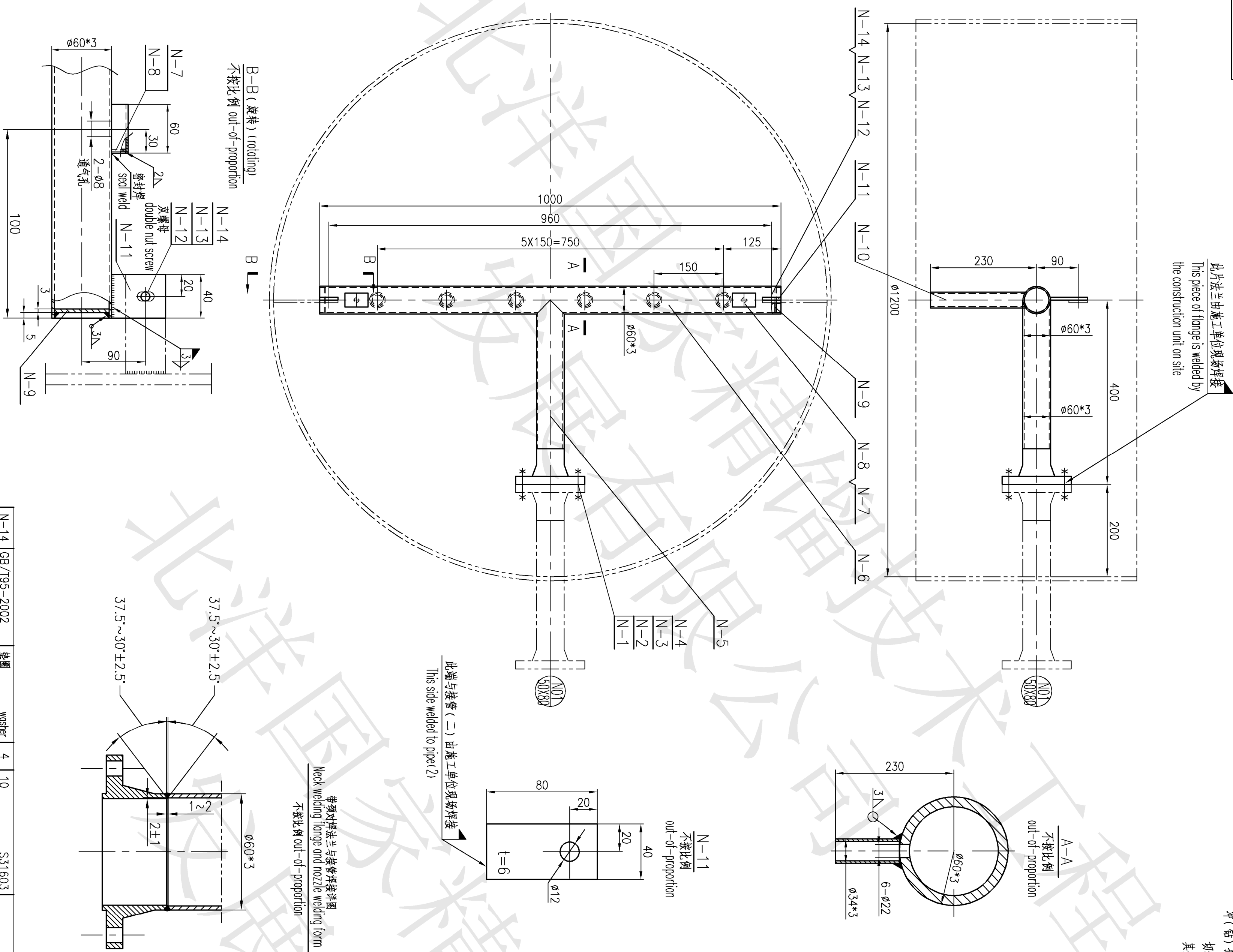


|              |                                     |                    |                |                                     |              |  |
|--------------|-------------------------------------|--------------------|----------------|-------------------------------------|--------------|--|
| N-10         | 螺母                                  | nut screw          | 12             | M16                                 | SJ1603       |  |
| N-9          | 螺钉                                  | screw              | 6              | M6x220                              | SJ1603       |  |
| N-8          | 连接板                                 | Connecting plate   | 6              | 钢板 6 steel plate 6                  | SJ1603       |  |
| N-7          | 支腿                                  | support            | 6              | 钢板 6 steel plate 6                  | SJ1603       |  |
| N-6          | GB/T35-2002<br>生圈                   | washer             | 12             | 10                                  | SJ1603       |  |
| N-5          | GB/T16.70-2015<br>螺母                | nut screw          | 22             | M10                                 | SJ1603       |  |
| N-4          | GB/T5783-2016<br>螺栓                 | screw bolt         | 24             | M10x30                              | SJ1603       |  |
| N-3-0        | 滚柱压圈                                | Roll-down ring     | 1              | 组合件 assembly parts                  | SJ1603       |  |
| N-2-0        | 二滚圈                                 | the second channel | 1              | 组合件 assembly parts                  | SJ1603       |  |
| N-1-0        | 一号圈                                 | the first channel  | 1              | 组合件 assembly parts                  | SJ1603       |  |
| 件号<br>number | 型号或标准号<br>number or standard number | 名称<br>name         | 数量<br>quantity | 材料及材料<br>specification and material | 备注<br>remark |  |

| 件号<br>number   | 名称<br>name | 材料<br>material | 比例<br>ratio | 所在图号<br>drawing number | 装配图号<br>assembly number |
|--|------------|----------------|-------------|------------------------|-------------------------|
|  <h1 style="text-align: center;">北洋国家精馏技术工程发展有限公司</h1> <p style="text-align: center;">Pei-yang National Distillation Technology Corporation Limited</p> |            |                |             |                        |                         |

|       |   |                                      |
|-------|---|--------------------------------------|
| 設計位置  | 2025.06.03                                  | 印尼 PGN 3 万吨/年新投产项目                   |
| 设计名称  | 2025.06.03                                  | Indonesia PGN 30,000 TPA NIN PROJECT |
| 审核/设计 | 2025.06.03                                  |                                      |
| 工艺/设计 | 2025.06.03                                  |                                      |
| 项目编号  | P025-171/25-042                             |                                      |
| 设计/项目 | P025-042/B1-02                              |                                      |
| 设计/项目 | 整回收收器内件部件图+200100001/200                    | 设计/项目                                |
| 设计/项目 | Internal drawing of Aletheia recovery tower | 设计/项目                                |
| 设计/项目 | 比例  | 比例                                   |
| 设计/项目 | 第 4 页/共 4 页                                 | 第 4 页/共 4 页                          |
| 设计/项目 | 共 8 页/共 8 页                                 | 共 8 页/共 8 页                          |

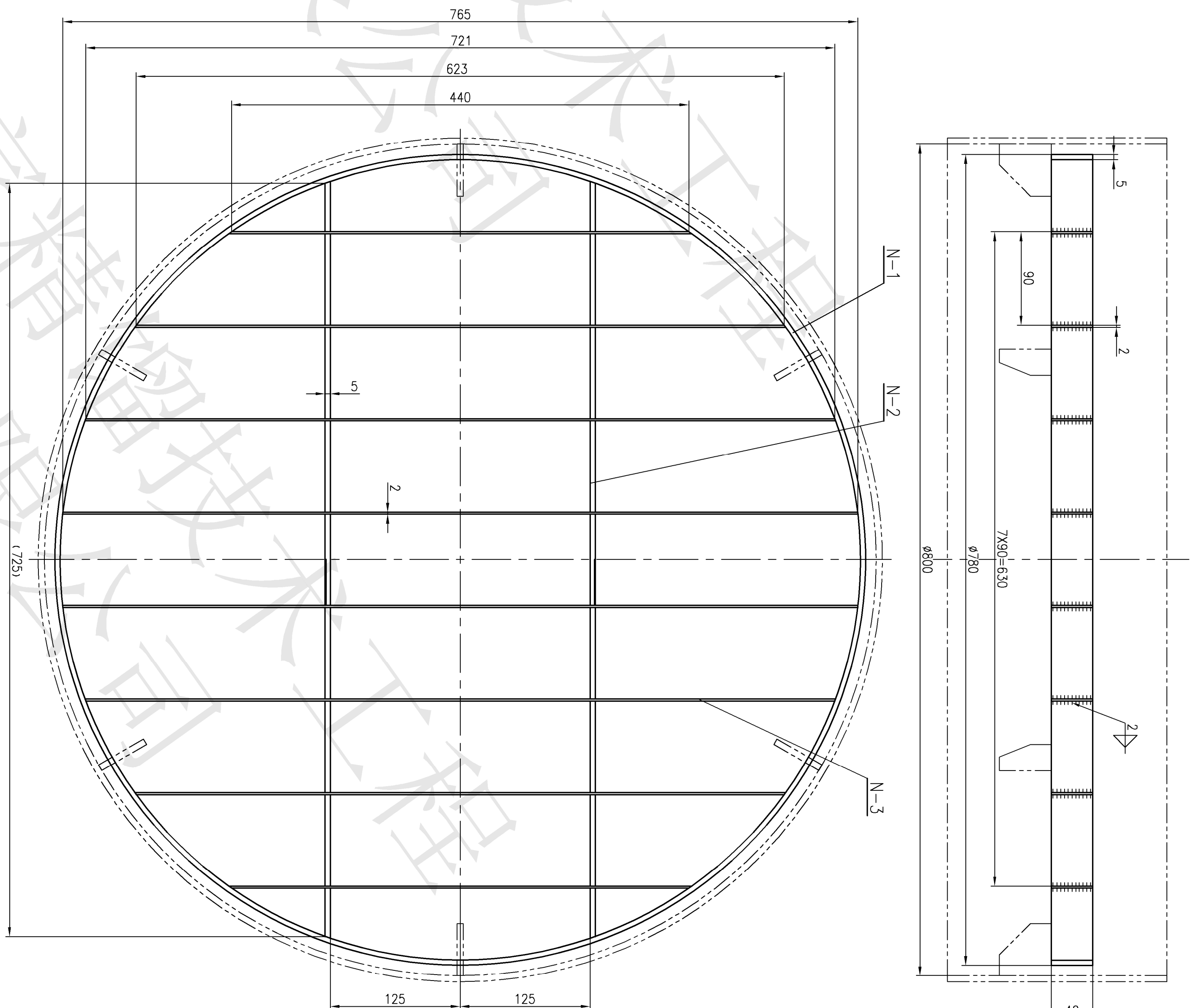




| 件号<br>part<br>number | 名称<br>name            | 材料<br>material | 组合件<br>assembly | 数量<br>number | 规格及材料<br>specification and material | 备注<br>Remarks |
|----------------------|-----------------------|----------------|-----------------|--------------|-------------------------------------|---------------|
| N-1                  | 进料分叉器<br>Feeding fork |                |                 | 1: 6         | P025-042/B1-03<br>P025-002-042/B1   |               |
| N-2                  | 进料分叉器<br>Feeding fork |                |                 | 1: 6         | P025-042/B1-03<br>P025-002-042/B1   |               |
| N-3                  | 进料分叉器<br>Feeding fork |                |                 | 1: 6         | P025-042/B1-03<br>P025-002-042/B1   |               |
| N-4                  | 进料分叉器<br>Feeding fork |                |                 | 1: 6         | P025-042/B1-03<br>P025-002-042/B1   |               |
| N-5                  | 进料分叉器<br>Feeding fork |                |                 | 1: 6         | P025-042/B1-03<br>P025-002-042/B1   |               |
| N-6                  | 进料分叉器<br>Feeding fork |                |                 | 1: 6         | P025-042/B1-03<br>P025-002-042/B1   |               |
| N-7                  | 进料分叉器<br>Feeding fork |                |                 | 1: 6         | P025-042/B1-03<br>P025-002-042/B1   |               |
| N-8                  | 进料分叉器<br>Feeding fork |                |                 | 1: 6         | P025-042/B1-03<br>P025-002-042/B1   |               |
| N-9                  | 进料分叉器<br>Feeding fork |                |                 | 1: 6         | P025-042/B1-03<br>P025-002-042/B1   |               |
| N-10                 | 进料分叉器<br>Feeding fork |                |                 | 1: 6         | P025-042/B1-03<br>P025-002-042/B1   |               |
| N-11                 | 进料分叉器<br>Feeding fork |                |                 | 1: 6         | P025-042/B1-03<br>P025-002-042/B1   |               |
| N-12                 | 进料分叉器<br>Feeding fork |                |                 | 1: 6         | P025-042/B1-03<br>P025-002-042/B1   |               |
| N-13                 | 进料分叉器<br>Feeding fork |                |                 | 1: 6         | P025-042/B1-03<br>P025-002-042/B1   |               |
| N-14                 | 进料分叉器<br>Feeding fork |                |                 | 1: 6         | P025-042/B1-03<br>P025-002-042/B1   |               |

冲(钻)孔  $\nabla_{12.5}^{12.5}$   
切边  $\nabla_{25}^{25}$   
其余  $\nabla$

冲(钻)孔  $\nabla_{12.5}$   
切边  $\nabla_{25}$   
其余  $\nabla$



12.5 孔  $\nabla$   
25 切边  $\nabla$   
其余  $\nabla$

技术要求 Technical requirements

1. 本零件制作应规整，不得扭曲变形。
2. 此正剖视图均为连续焊接，焊脚尺寸为两相零件中较薄零件厚度，焊后应除焊渣。
3. 所有零件尖角倒钝，去毛刺。
4. Trimming all sharp angles.
5. 本零件安装水平度偏差  $\leq 1\text{mm}$ .
6. The horizontal deviation must be less than 1mm.
7. N 为装配图中零件号，本图中 N 为 5。
8. N is the part No. of assembly drawing, and in this drawing N is 5.

[illegible]


 北洋国豕精馏技术工程及展有限公司  
 Pei-yang National Distillation Technology Corporation Limited

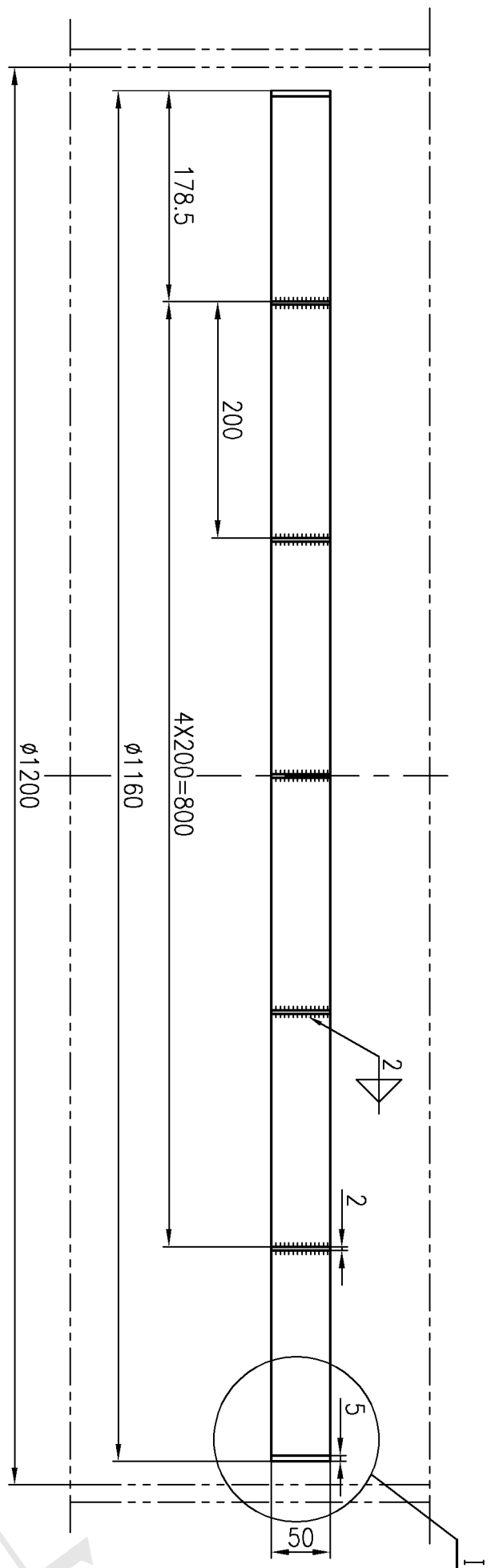
印尼PON 3 万吨/年新戊二酐项目  
Indonesia PON 30,000 TPA NPG PROJECT

|    |       |                      |
|----|-------|----------------------|
| 比例 | Ratio | construction drawing |
|----|-------|----------------------|

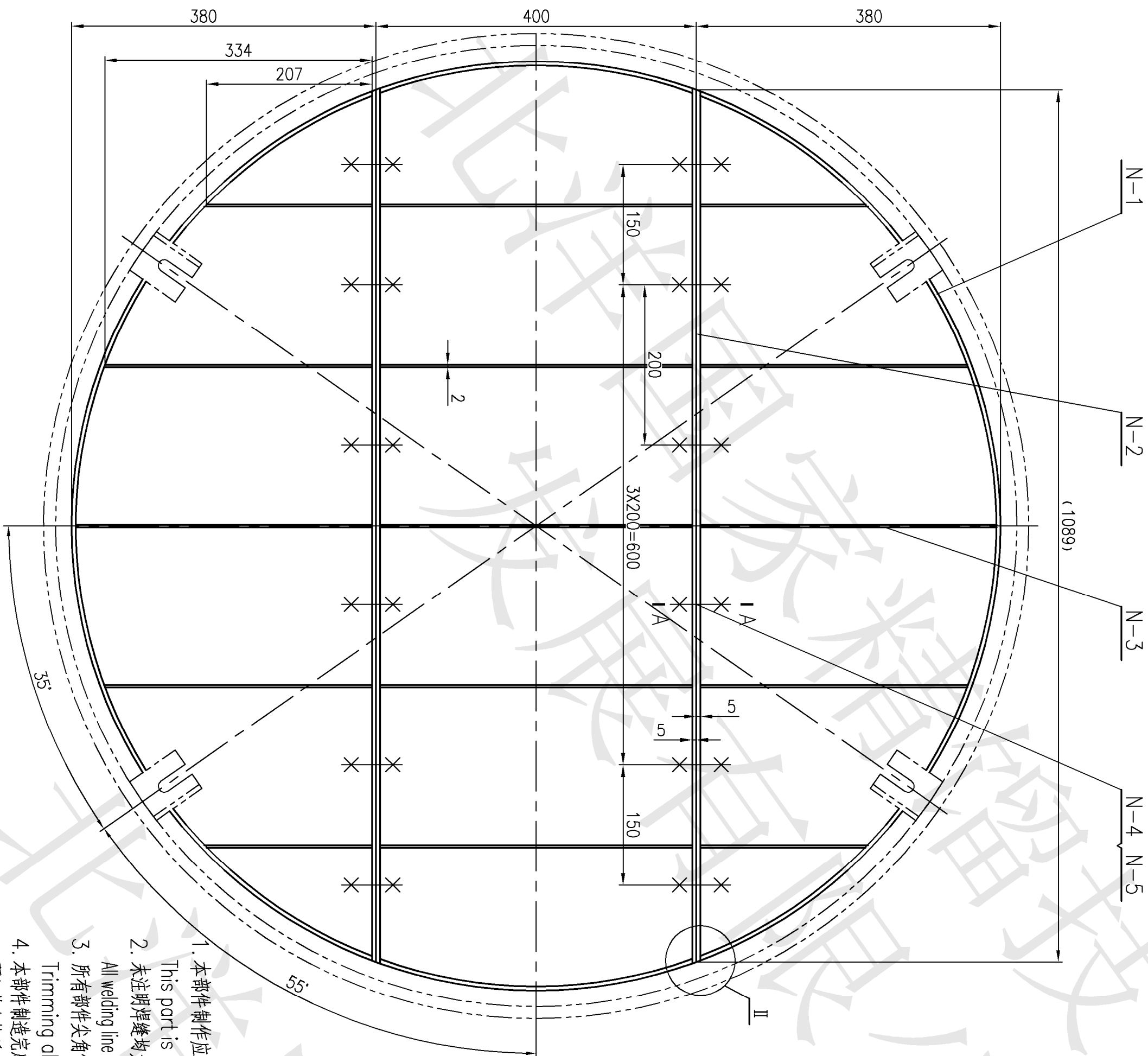
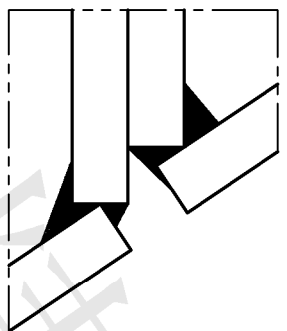
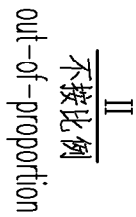
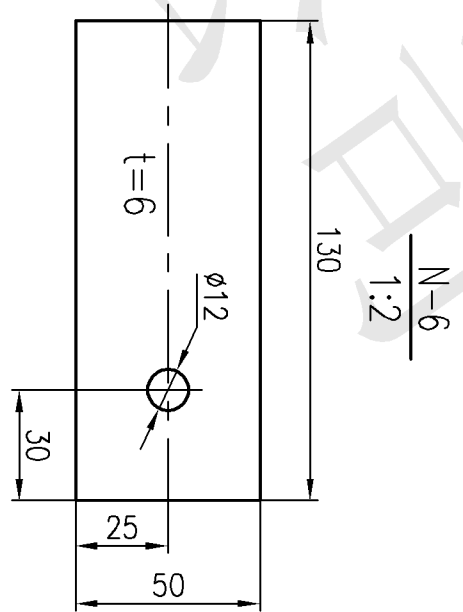
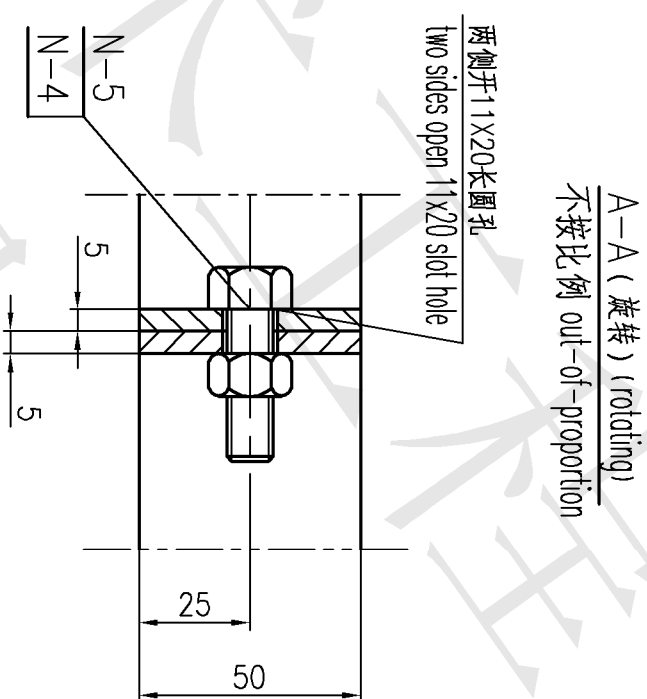








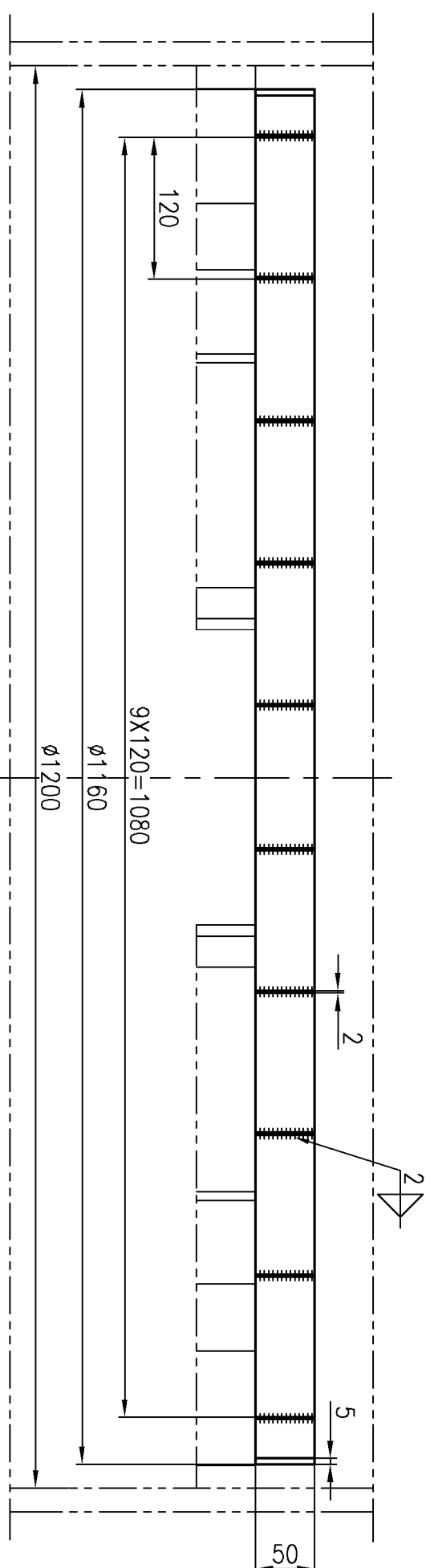
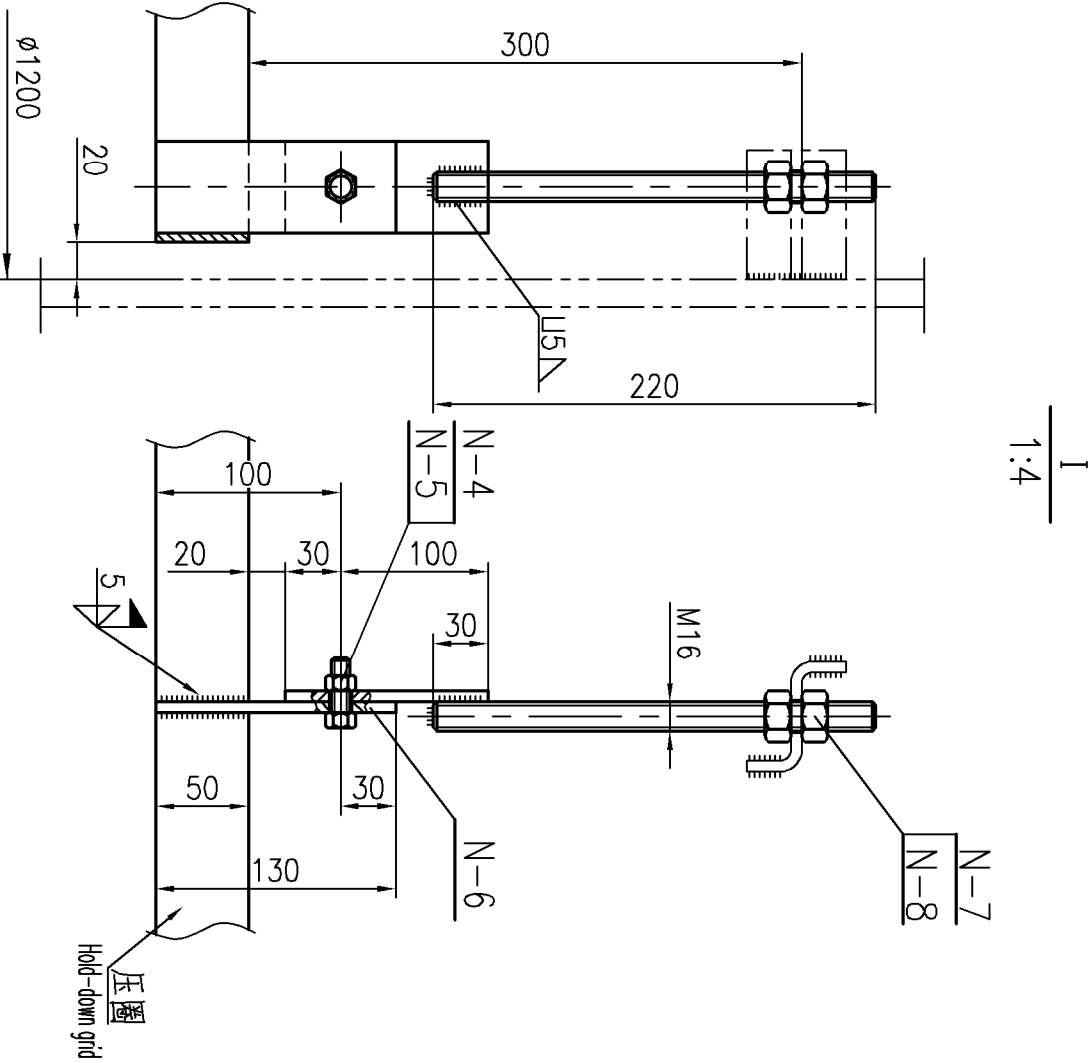
|       |      |
|-------|------|
| 钻(冲)孔 | 12.5 |
| 切边    | 25   |
| 其余    |      |



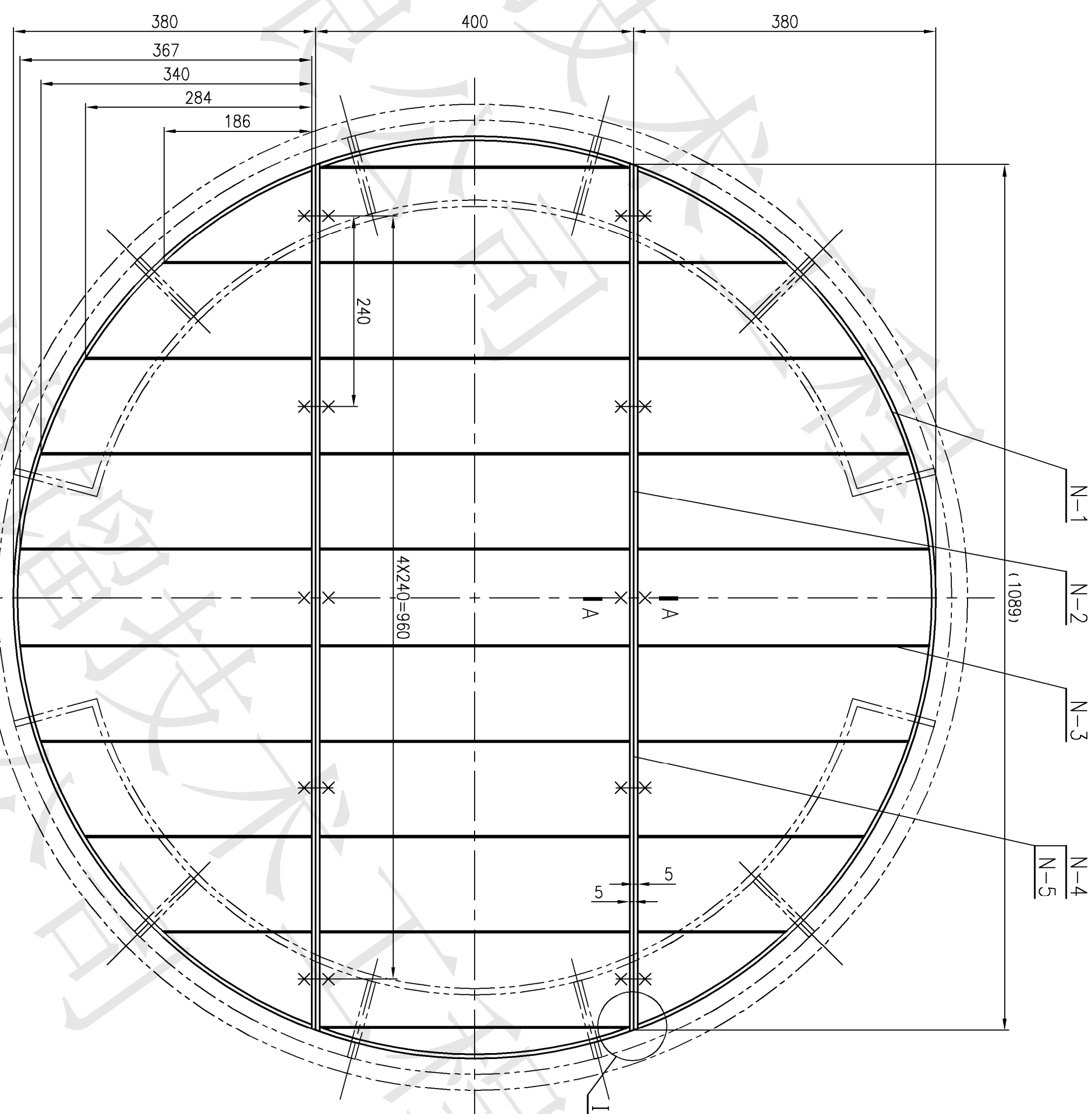
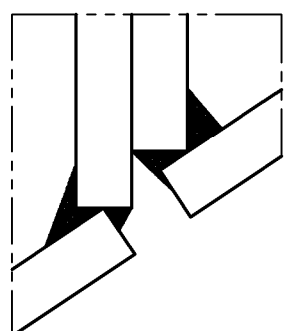
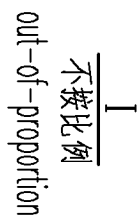
## 技术要求 Technical requirements

1. 本零件制作应规整，不得扭曲变形。
2. This part is made normalized, not to warp and deform.
3. 未注焊缝均为连续焊缝，焊脚尺寸为两材料中较薄零件的厚度，焊后清除焊渣。
4. All welding line is continuous weld unless specified, and leg height is the thinner one's.
5. 所有断角应倒钝，去毛刺。
6. Trimming all sharp angles.
7. 本零件制造完成后应在安装现场做预装，应进行预组装。
8. The parts should be assembled on site before going into the tower.
9. 预组装合格后，在各相关零部件上作定位标记。
10. The installation site should be pre-assembled, when the pre-assembly is qualified.
11. 本零件安装水平度偏差  $\leq 2\text{mm}$ 。
12. The horizontal deviation must be less than 2mm.
13. N为装配图中件号，本图中N为8。
14. N is the part No. of assembly drawing, and in this drawing N is 8.
15. 图中N处表示由施工单位现场焊接。
16. N should be welded at site by the construction units.

| N-8    | GB/T6170--2015 | 螺母       | nut screw        | 8              | M16             | SJ1603 |
|--------|----------------|----------|------------------|----------------|-----------------|--------|
| N-7    |                | 螺栓       | screw            | 4              | M16x220         | SJ1603 |
| N-6    |                | 连接板      | Connection plate |                | 规格6             | SJ1603 |
| N-5    | GB/T6170--2015 | 螺母       | nut screw        | 16             | M10             | SJ1603 |
| N-4    | GB/T5783--2016 | 螺栓       | screw bolt       | 16             | M10X30          | SJ1603 |
| N-3    |                | 提手       | grd              | 4.9m           | 规格5             | SJ1603 |
| N-2    |                | 横档       | cross tendon     | 4.4m           | 规格5             | SJ1603 |
| N-1    |                | 外圈       | outside band     | 1              | 橡胶垫             | SJ1603 |
| 件号     | 图号或标准号         | 名        | 称                | 数量             | 规格及材料           |        |
| N-0    | 基础压圈Hdd-dwd    | 组件       | assembly parts   |                | 1:5             |        |
| 零件号    | 名称             | 材料       | 比例               | 所在图号           | 装配序号            | 备注     |
| number | name           | material | ratio            | drawing number | assembly number |        |



|       |      |  |
|-------|------|--|
| 钻(冲)孔 | 12.5 |  |
| 切边    | 25   |  |
| 其余    |      |  |



### 技术要求 Technical requirements

1. 本零件製作應規畫，不得扭曲變形
2. 此部分應作 normalizing 到 to warp and deform.
3. 未注形位公差均為連續性接，焊腳尺寸為兩組件中較薄件的厚度，焊後清除焊渣。
4. All welding line is continuous weld unless specified, and leg height is the thinner one's.
5. 所有零件尖角倒鈍，去毛刺。
6. Trimming all sharp angles.
7. 本零件製造完成後及在安裝或裝進前，應進行預組裝。
8. 預組裝合格後，在各相關零件上作定位標示。
9. The various parts of the components after construction or before going into the lower of the installation site should be pre-assembled, when the pre-assemble is qualified, positioning location marks on the relevant parts.
10. 本零件安裝水平度公差  $\leq 2\text{mm}$ 。
11. The horizontal deviation must be less than 2mm.
12. N 為裝配圖中的件號，本圖中 N 為 11。
13. N is the part No. of assembly drawing, and in this drawing N is 11.

|     |                    |     |                |       |                        |                         |  |
|-----|--------------------|-----|----------------|-------|------------------------|-------------------------|--|
| N-5 | 69/761/0-2015      | 螺母  | nut screw      | 10    | M10                    | S31603                  |  |
| N-4 | 69/75/83-2016      | 螺栓  | screw bolt     | 10    | M10X2.0                | S31603                  |  |
| N-3 |                    | 垫板  | gird           | 8.6m  | 垫板 2                   | S31603                  |  |
| N-2 |                    | 主垫板 | cross tendon   | 4.4m  | 垫板 5                   | S31603                  |  |
| N-1 |                    | 外圈  | outside bond   | 1     | 垫板 5                   | S31603                  |  |
| 件号  | 图号或标准号             | 名称  | 数量             | 规格及材料 | 备注                     |                         |  |
| N-0 | 填料袋(2) bed support | 组合件 | assembly parts | 1: 5  | P003-442/81-05         | P003-442/81             |  |
| 件号  | 名称<br>name         | 材料  | 比例             | 件号    | 所在轴号<br>drawing number | 装配序号<br>assembly number |  |
|     |                    |     |                |       |                        |                         |  |

北洋国家精馏技术工程及展览有限公司  
Pei-yang National Distillation Technology Corporation Limited



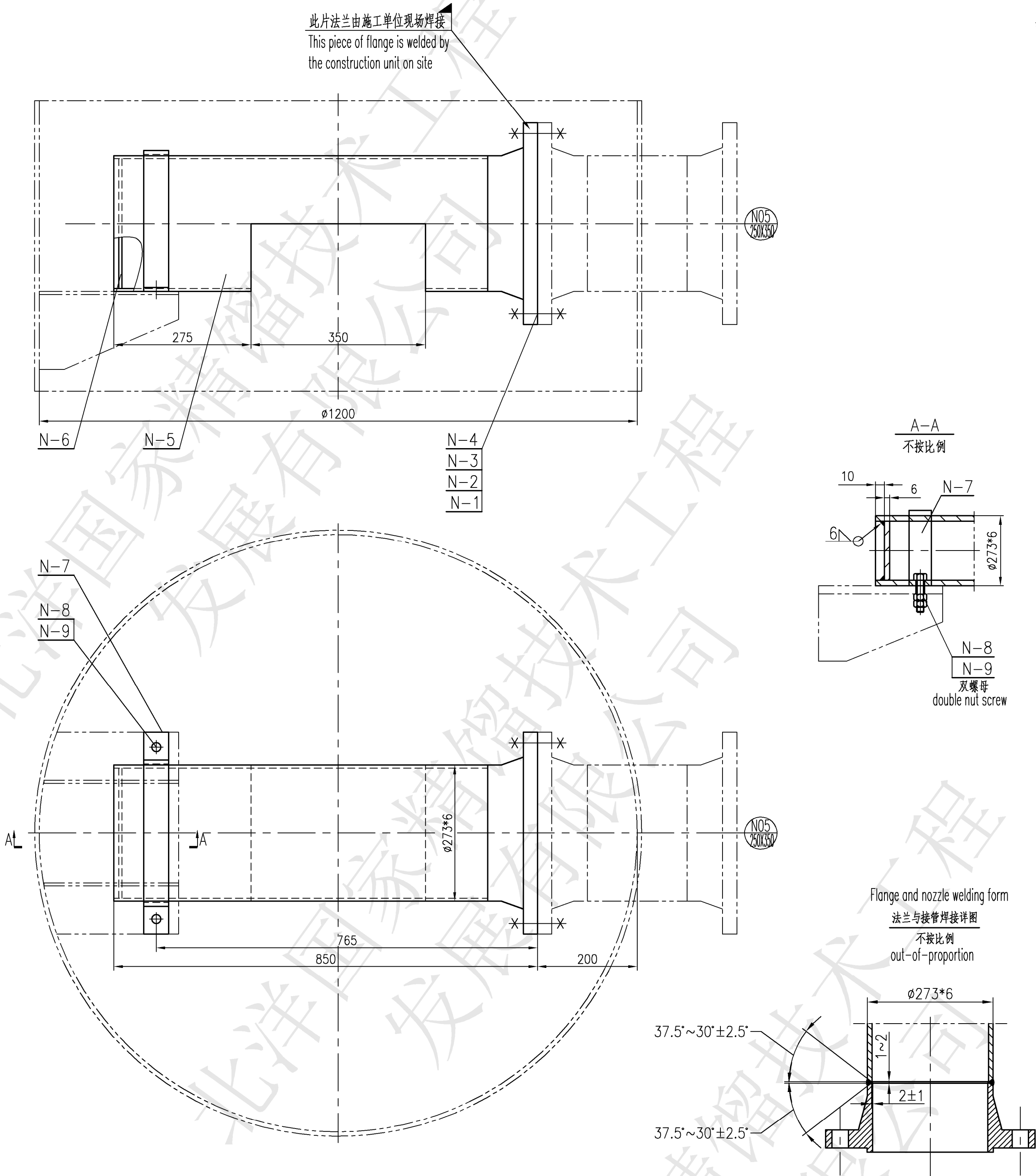
Pei-yang National Distillation Technology Corporation Limited

|           |     |            |   |
|-----------|-----|------------|---|
| 设计 design | 潘晓商 | 2025.06.03 | 印尼 PON 3 万吨/年新戊二醇项目<br>Indonesia PON 30,000 TPA NPG PROJECT |
| 校对 check  | 李彬  | 2025.06.03 |   |



| 中試設備  | 7-9月                       | 2023.06.01           |
|---|----------------------------|----------------------|
| エーゼン回収塔                                     | エーゼン回収塔内付耐圧釜(11-2000)/2000 | CONSTITUTION DRAWING |
| Internal drawing of Aldehyde recovery tower | 比例<br>Ratio                | 仕様書(Drawing)         |

|                     |                  |                 |                            |
|---------------------|------------------|-----------------|----------------------------|
| 项目编号<br>project No. | PYD25-171/25-042 |                 |                            |
|                     |                  | PYD25-042/B1-05 |                            |
|                     |                  |                 | 第 7 页 Page 7 共 8 页 Total 8 |





技术要求 Technical requirements

- 本部件制作应规整，不得扭曲变形。所有部件尖角倒钝，去毛刺。  
This part is made normalizely,not to warp and deform.Trimming all sharp angles.  
Trimming all sharp angles.
- 本部件安装水平度偏差≤2mm。  
The horizontal deviation must be ≤2mm.
- 未注明焊缝均为连续角焊缝，焊脚尺寸为两相焊件中较薄件的厚度，焊后清除焊渣。  
All welding seam shall be continuous weld unless specifying. And leg height is the thinner one's.  
Remove welding slag after welding.
- 法兰按相关标准跨中焊接。  
Flange shall be welded in accordance with relevant standards.
- 图中  处表示由施工单位现场焊接。  
 means welded by construction unit in the filed sit.
- N为装配图中的件号，本图N为13。  
N is No. of Internal drawing, and in this drawing N is 13.

|     |                 |      |                     |    |                   |        |                           |
|-----|-----------------|------|---------------------|----|-------------------|--------|---------------------------|
| N-9 | GB/T6170-2015   | 螺母   | nut screw           | 4  | M16               | S31603 |                           |
| N-8 | GB/T5783-2016   | 螺栓   | screw bolt          | 2  | M16X70            | S31603 |                           |
| N-7 | JL标-02-2018     | U型管夹 | U-shaped pipe clamp | 1  | DN250(A)          | S31603 |                           |
| N-6 |                 | 堵板   | blind               | 1  | 钢板6 steel plate 6 | S31603 | 配件compounding manufacture |
| N-5 |                 | 接管   | pipe                | 1  | φ273*6            | S31603 |                           |
| N-4 | GB/T6170-2015   | 螺母   | nut screw           | 12 | M24               | S31603 |                           |
| N-3 | GB/T5783-2016   | 螺栓   | screw bolt          | 12 | M24X105           | S31603 |                           |
| N-2 | HG/T20631-2009  | 缠绕垫  | gasket              | 1  | D250-150          | 5525   |                           |
| N-1 | ASME B16.5-2020 | 法兰   | flange              | 1  | WN250-150 RF      | S31603 |                           |

| 件号<br>piece number | 图号或标准号<br>drawing no. or standard no. | 名 称<br>name | 数量<br>number       | 规格及材料<br>specification and material |                          | 备注<br>remark                 |                         |
|--------------------|---------------------------------------|-------------|--------------------|-------------------------------------|--------------------------|------------------------------|-------------------------|
| N-0                | 气相分布管 Gas Feed Pipe                   |             | 组合件 assembly parts |                                     | 1 : 6                    | PYD25-042/B1-06 PYD25-042/B1 |                         |
| 件号<br>piece number | 名 称<br>name                           |             | 材 料<br>material    |                                     | 比 例<br>weight (kg) ratio | 所在图号<br>drawing number       | 装配图号<br>assembly number |



北洋国家精馏技术工程发展有限公司  
 Pei-yang National Distillation Technology Engineering Development Co., Ltd.

|                     |                  |            |   |               |                          |
|---------------------|------------------|------------|---|---------------|--------------------------|
| 设计design            | 潘晓琦              | 2025.06.03 | 印尼PON 3 万吨/年新戊二醇项目                          |               |                          |
| 校对check             | 郭彬               | 2025.06.03 | Indonesia PON 30,000 TPA NPG PROJECT        |               |                          |
| 审核review            | 许力强              | 2025.06.03 | 醛回收塔内件部件图 (T-2201) (DN800/1200)             | 设计阶段Phase     | 施工图 construction drawing |
| 工艺technology        |                  |            | Internal drawing of Aldehyde recovery tower | 比例 Ratio      |                          |
| 项目编号<br>project NO. | PYD25-171/25-042 |            | PYD25-042/B1-06                             | 总重Weight (kg) |                          |
|                     |                  |            |   | 第 8 页Page8    | 共 8 页Total8              |