





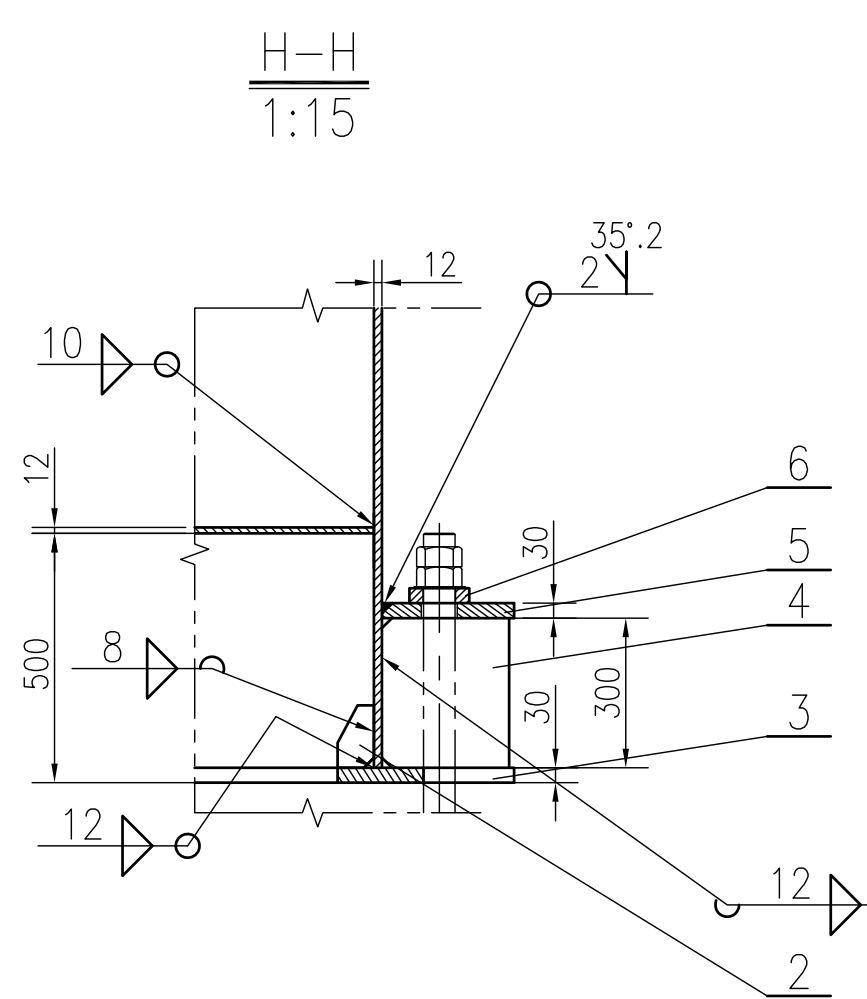
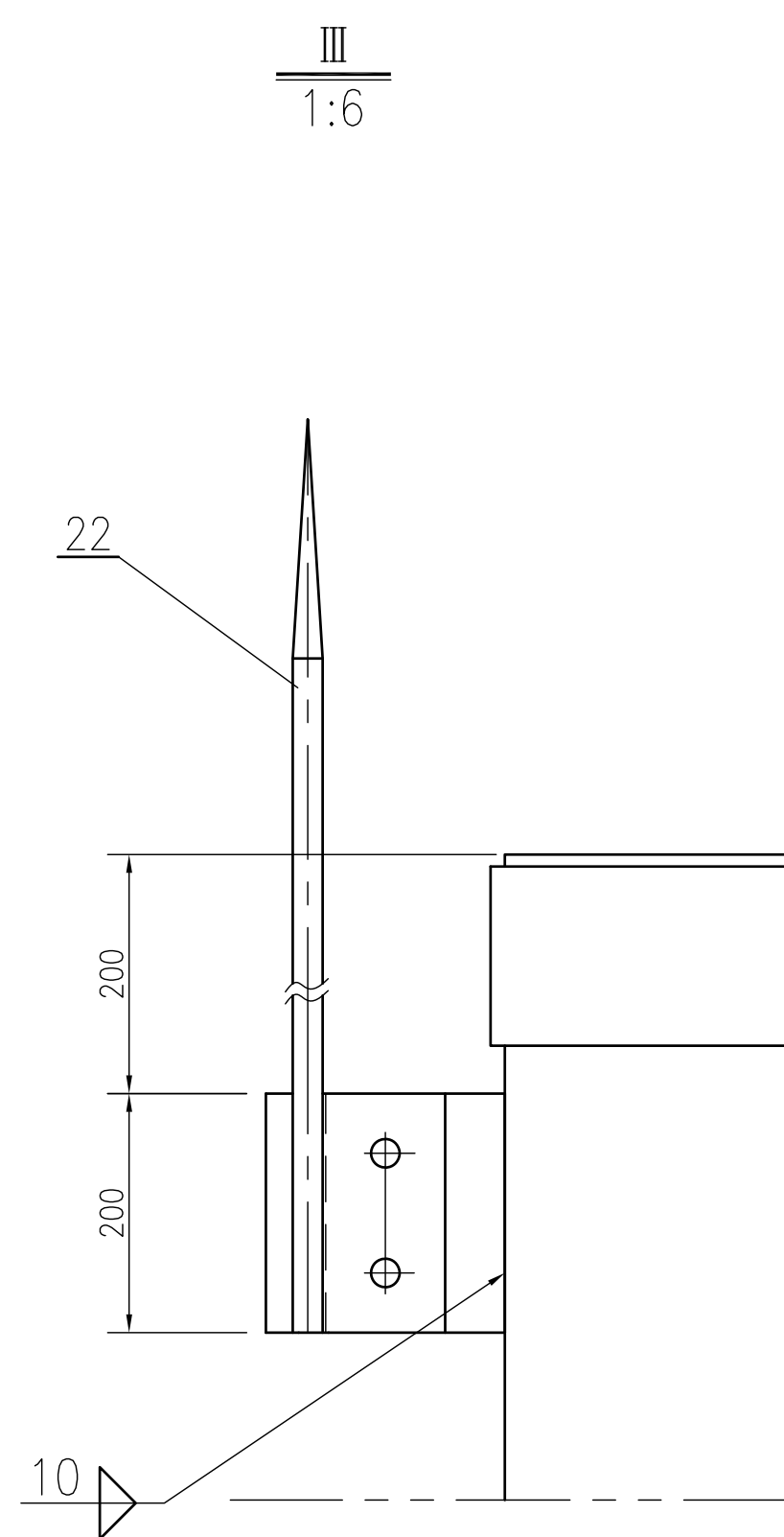
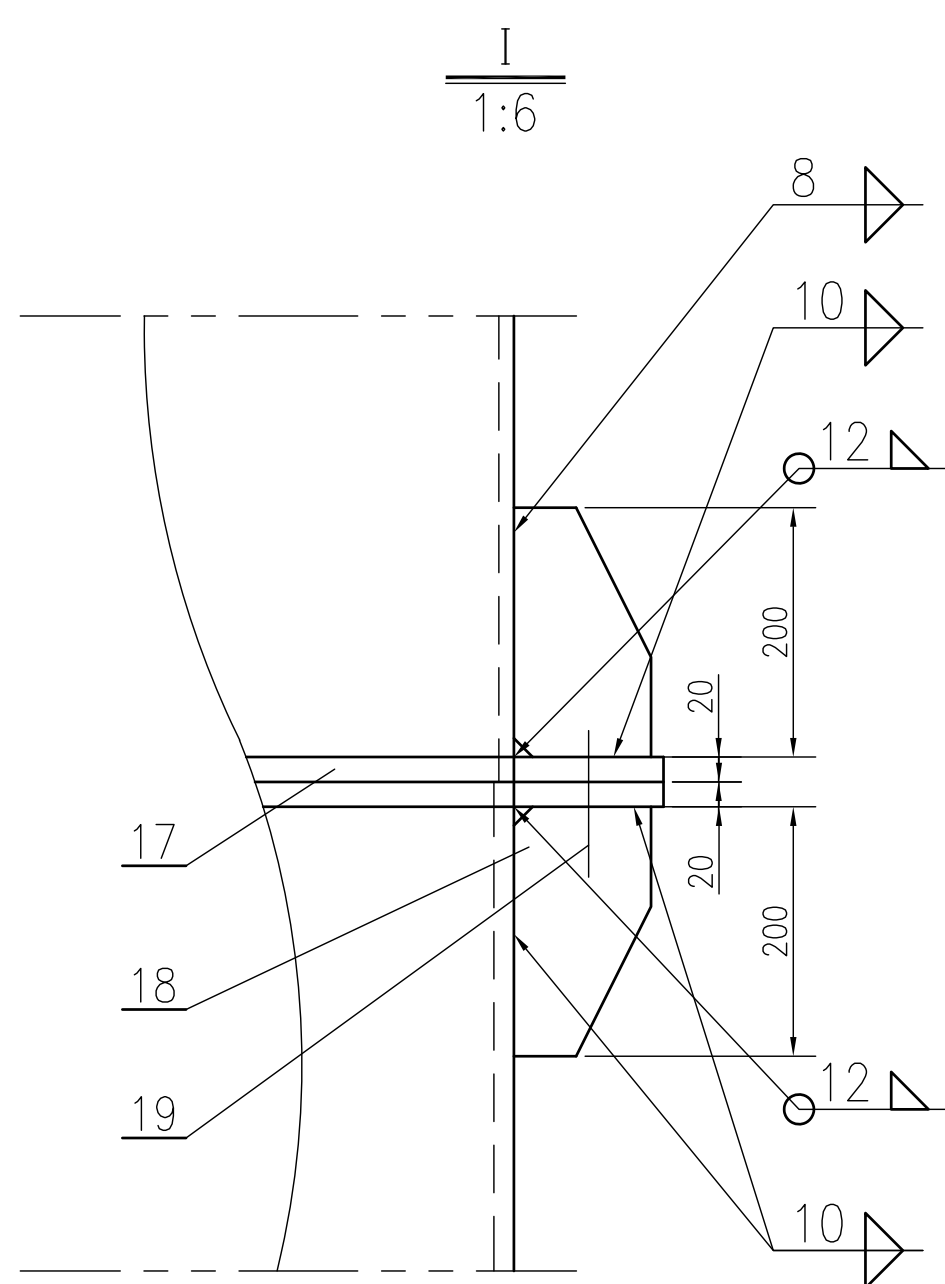
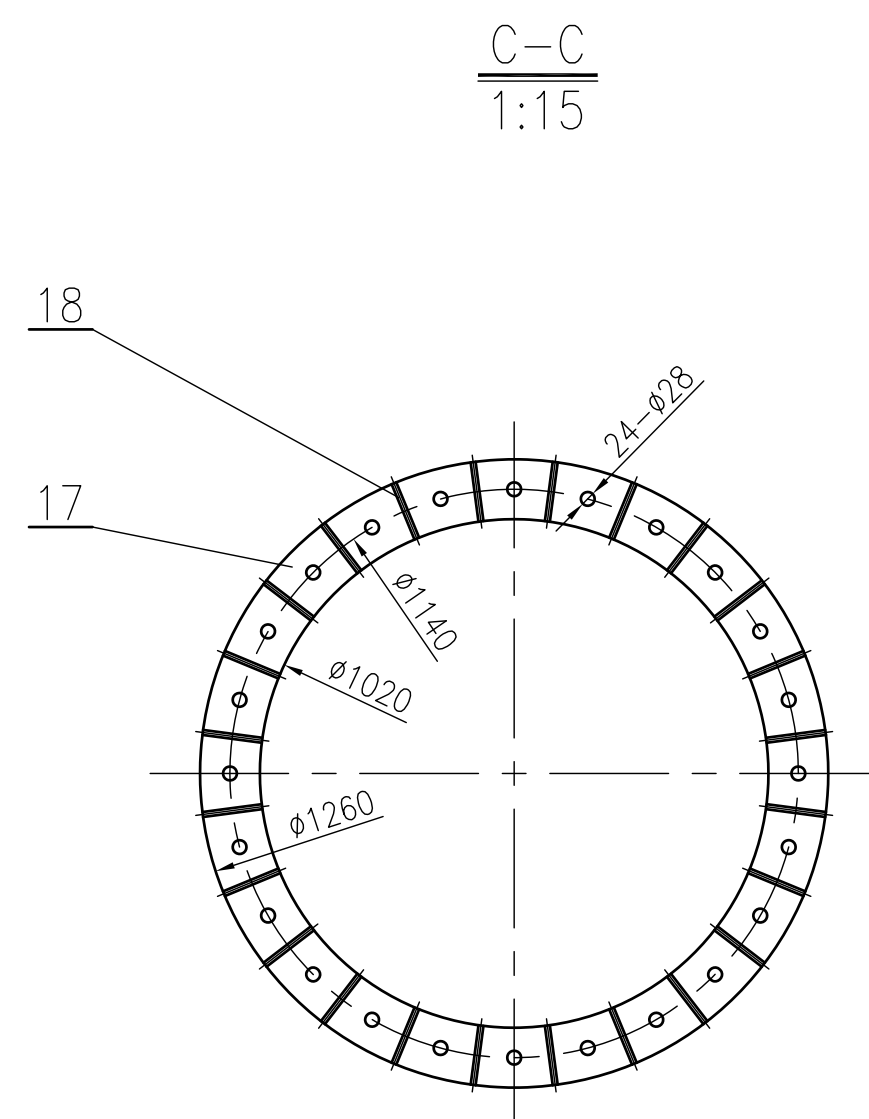
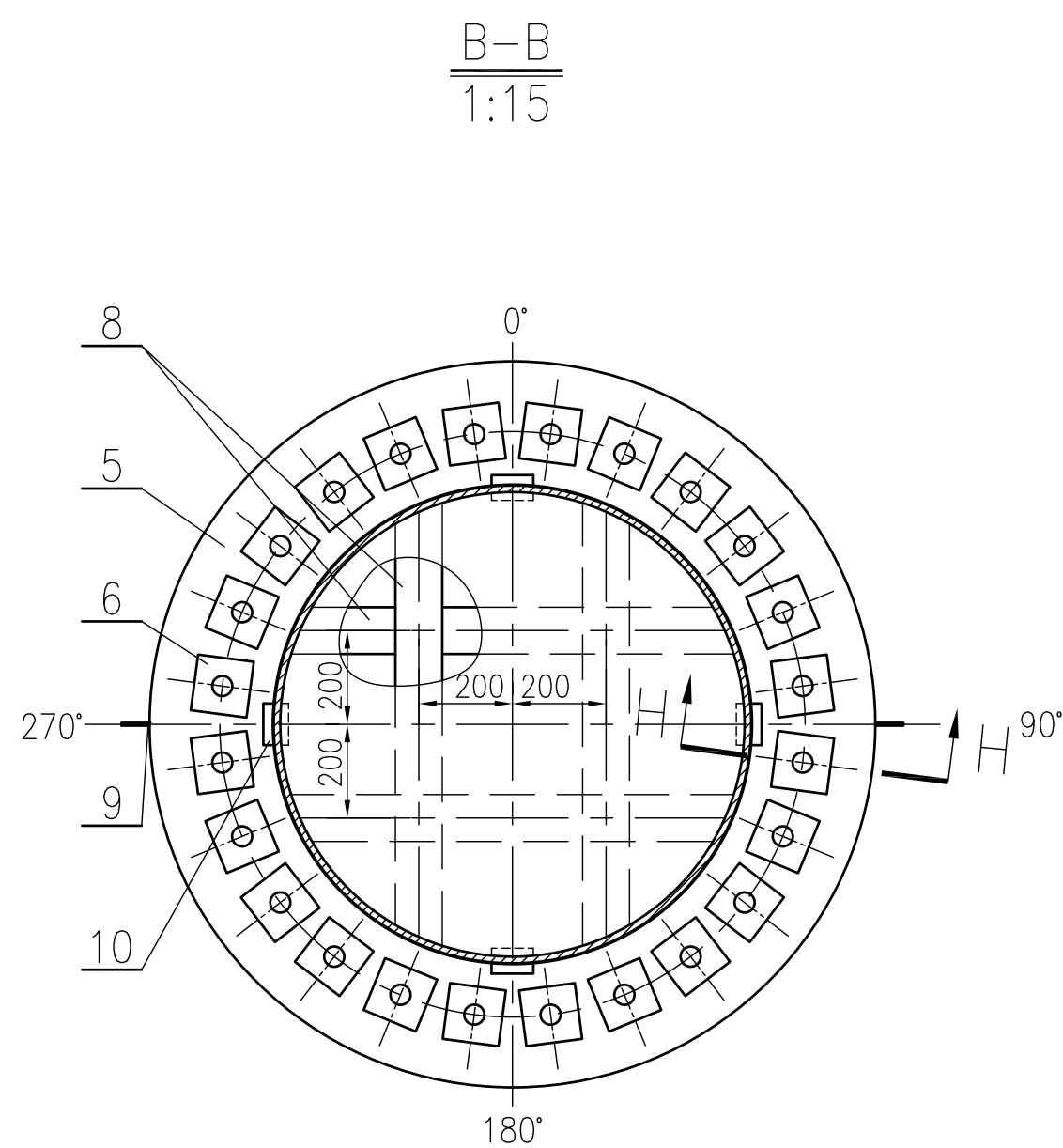
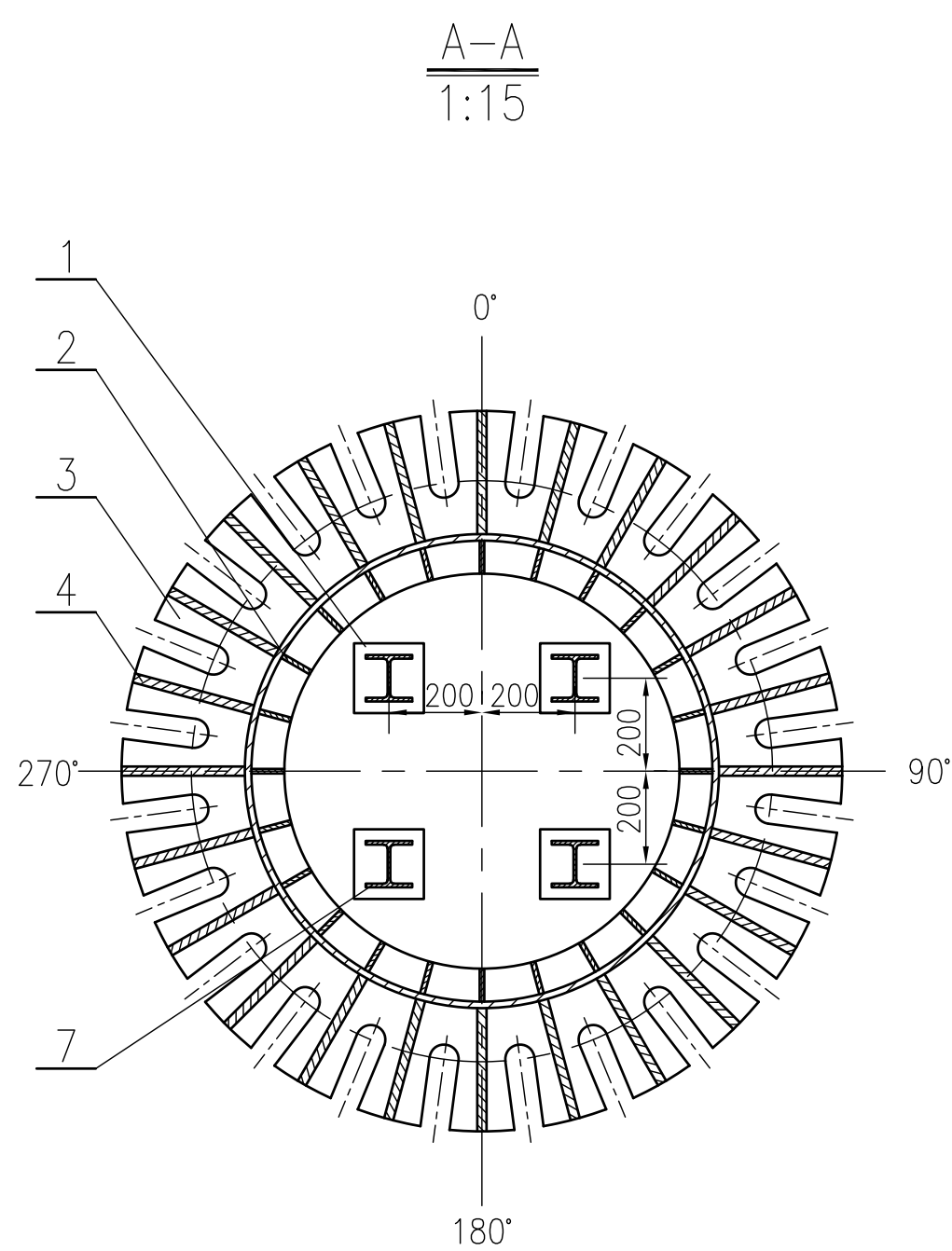
Nozzle list						
Number	Name	Quantity	PN Class	DN mm	Joint face type	Notes
A1	Flue gas inlet	1	2.5	800	DN800-Pn2.5 RF	
A2	Sampling port	1	150	100	DN100-Class150 RF	Nozzle extension150
A3	Sampling port	1	150	100	DN100-Class150 RF	Nozzle extension150
A4	Drain outlet	1	150	50	DN50-Class150 RF	HG/T 20615
M1	Manhole	1		450		

27	SRD2502-3441-27	Sampling hanger	2	Q235B-GB/T700	1.85	3.7	Azimutb25, 30
26	SRD2502-3441-26-00	Shaft-type lifting lug	2	Assembly	92.8	186	Azimutb01, 1807
25	As per this drawing	Clayte reinforcing section1044x12=1000	1	Q235B-GB/T700	306	306	
24	SRD2502-3441-24-00	Plate-type lifting lug	2	Assembly	28	112	Azimutb01, 1807
23	As per this drawing	Chimney external insulation	2.4m ²	Aluminum silicate fiber cotton			
22	As per this drawing	Stiffening ring $\phi 1044/\phi 1020, L=150$	1	Q235B-GB/T700	45.9	45.9	
21	SRD2502-3441-21-00	Lightning rod	2	Assembly	12.6	33.2	
20	SRD2502-3441-20-00	Chimney spiral staircase and platform	1	Assembly	-	3018	
19	GB/T 5783-2009	High tensile hexagon head M24x160anchoring spring steel	24sets	Class 8.8/Class 8	-	-	
18	SRD2502-3441-18	Rib plate for segmented flange-1=12	48	Q235B-GB/T700	1.72	82.6	
17	SRD2502-3441-17	Segmented flange	2	Q235B-GB/T700	63.3	127	
16	SRD2502-3441-16-00	Inclined ladder T2B07c-1.2	1	Assembly	144	144	
15	As per this drawing	Support ring for external insulation $\phi 1100/\phi 1020, I=6$	7	Q235B-GB/T700	6.3	44.1	
14	As per this drawing	Straight cylinder $\phi 1020x8, H=8000$	1	Q235B-GB/T700	1598	1598	
13	As per this drawing	Straight cylinder $\phi 1020x12, H=11770$	1	Q235B-GB/T700	3512	3512	
12	SRD2502-3441-12-00	Nameplate and nameplate bracket	1	Assembly	2.87	2.87	
11	As per this drawing	Base plate #992, t=12	1	Q235B-GB/T700	72.4	72.4	
10	As per this drawing	Vent pipe $\phi 89x4, L=54$	4	20-GB/T8163	0.45	1.8	Exposed length20mm
9	SRD2502-3441-09	Electrostatic grounding plate $60x50x6$	2	S30408-GB/T20878	0.14	0.28	Azimutb01, 2107
8	As per this drawing	H-beam HW100x100x6x8, L=860	4	Q235B-GB/T700	14.7	58.5	Oil is required and surface coating
7	As per this drawing	H-beam HW100x100x6x8, L=380	4	Q235B-GB/T700	6.46	25.9	Oil is required and surface coating
6	SRD2502-3441-06	Bolt cover plate $\phi 120x120x20$	24	Q235B-GB/T700	1.9	45.6	Central hole with $\phi 63$
5	SRD2502-3441-05	Skirt wash plate $\phi 1450/\phi 1300, L=30$	1	Q235B-GB/T700	195	195	
4	SRD2502-3441-04	Outer stiffener for skirt support300x25x620	24	Q235B-GB/T700	0.62	14.9	Inner edge chamfer
3	SRD2502-3441-03	Base plate of skirt support $\phi 1550/\phi 950, L=30$	1	Q235B-GB/T700	249	249	
2	SRD2502-3441-02	Inner stiffener for skirt support L=10	24	Q235B-GB/T700	0.62	14.9	Inner edge chamfer
1	As per this drawing	Base plate of skirt support $150x150x20$	4	Q235B-GB/T700	3.5	14	

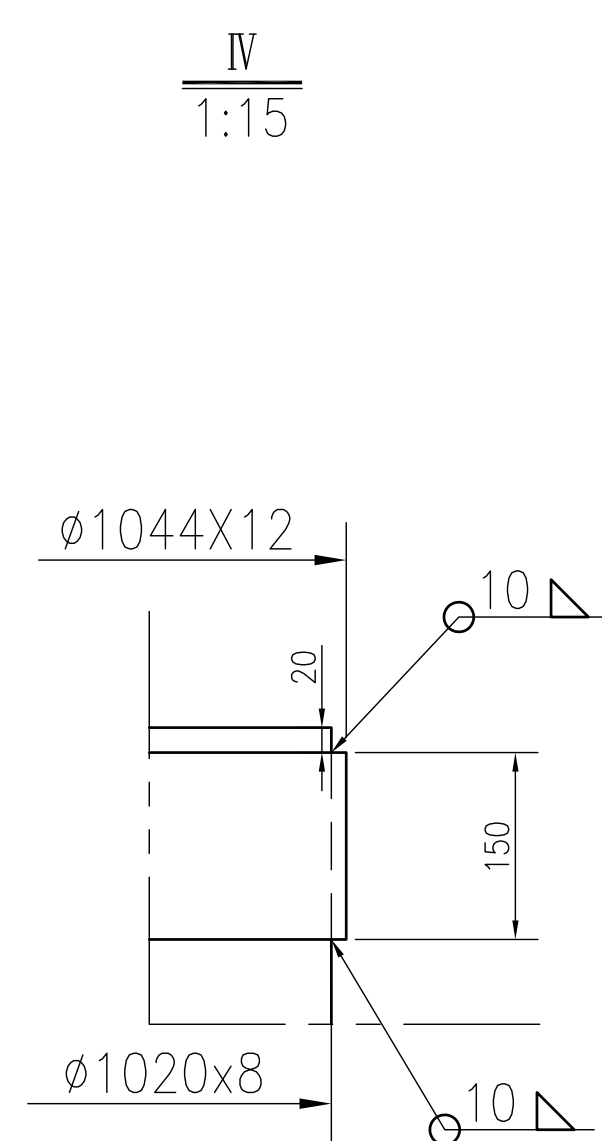
Self-supporting chimney#20-D1.0												Material Assembly												Ratio 1:30												WT. 10040kg																																															
B0												亮程												付银成												王为文												2025.06.12																																			
版次												说明												设计												校核												审核												审定												日期											
REV.NO												DESCRIPTION												DRAWN												CHKD.												APPR.												FINAL APPR.												ISSUE DATE											
 江苏瑞鼎环境工程有限公司 JIANGSU RUIDING ENVIRONMENTAL ENGINEERING CO., LTD.												 上海瑞鼎环境工程技术有限公司 SHANGHAI RUIDING ENVIRONMENTAL ENGINEERING CO., LTD.																																																																							
用户 OWNER												PT PETRO OXO NUSANTARA												本图纸经审核许可，不得以任意方式复制或用于非本项目之其他用途。 NOT TO REPRODUCE OR EMPLOY FOR OTHER PURPOSES OTHER THAN THIS PROJECT WITHOUT WRITTEN CONSENT FROM RUIDING.																																																											
项目 PROJ.												30000 TPA NPC PROJECT																																																																							
装置/工厂 UNIT												Waste Gas & Waste Liquid Incineration																																																																							
图名												Self-supporting chimney#20-D1.0																																																																							
图号 DWS, NAME																								SRD2502-3441-0																																																											
																								阶段 PHASE												Detailed design												合同号 CONTRACT NO.												SHRD-2025-04																							
																								比例 SCALE												1:30												第 1 张 SHEET												共 2 张 OF																							
																								项目号 PROJ. NO.												SRD2502												专业 SPECIAL												Device																							
																								图号 DRAWING NO.												SRD2502-3441-00																																															

Self-supporting chimney#20-D1.0												Material Assembly												Ratio 1:30												WT. 10040kg																																															
B0												亮程												付银成												王为文												2025.06.12																																			
版次												说明												设计												校核												审核												审定												日期											
REV.NO												DESCRIPTION												DRAWN												CHKD.												APPR.												FINAL APPR.												ISSUE DATE											
 江苏瑞鼎环境工程有限公司 JIANGSU RUIDING ENVIRONMENTAL ENGINEERING CO., LTD.												 上海瑞鼎环境工程技术有限公司 SHANGHAI RUIDING ENVIRONMENTAL ENGINEERING CO., LTD.																																																																							
用户 OWNER												PT PETRO OXO NUSANTARA												本图纸经审核可行，不得以任意方式复制或用于非本项目其他用途。 NOT TO REPRODUCE OR EMPLOY FOR OTHER PURPOSES OTHER THAN THIS PROJECT WITHOUT WRITTEN CONSENT FROM RUIDING.																																																											
项目 PROJ.												30000 TPA NPC PROJECT																																																																							
装置/工厂 UNIT												Waste Gas & Waste Liquid Incineration																																																																							
图名												Self-supporting chimney#20-D1.0																																																																							
图号 DWS, NAME																								SRD2502-3441-0																																																											
																								阶段 PHASE												Detailed design												合同号 CONTRACT NO.												SHRD-2025-04																							
																								比例 SCALE												1:30												第 1 张 SHEET												共 2 张 OF																							
																								项目号 PROJ. NO.												SRD2502												专业 SPECIAL												Device																							
																								图号 DRAWING NO.												SRD2502-3441-00																																															

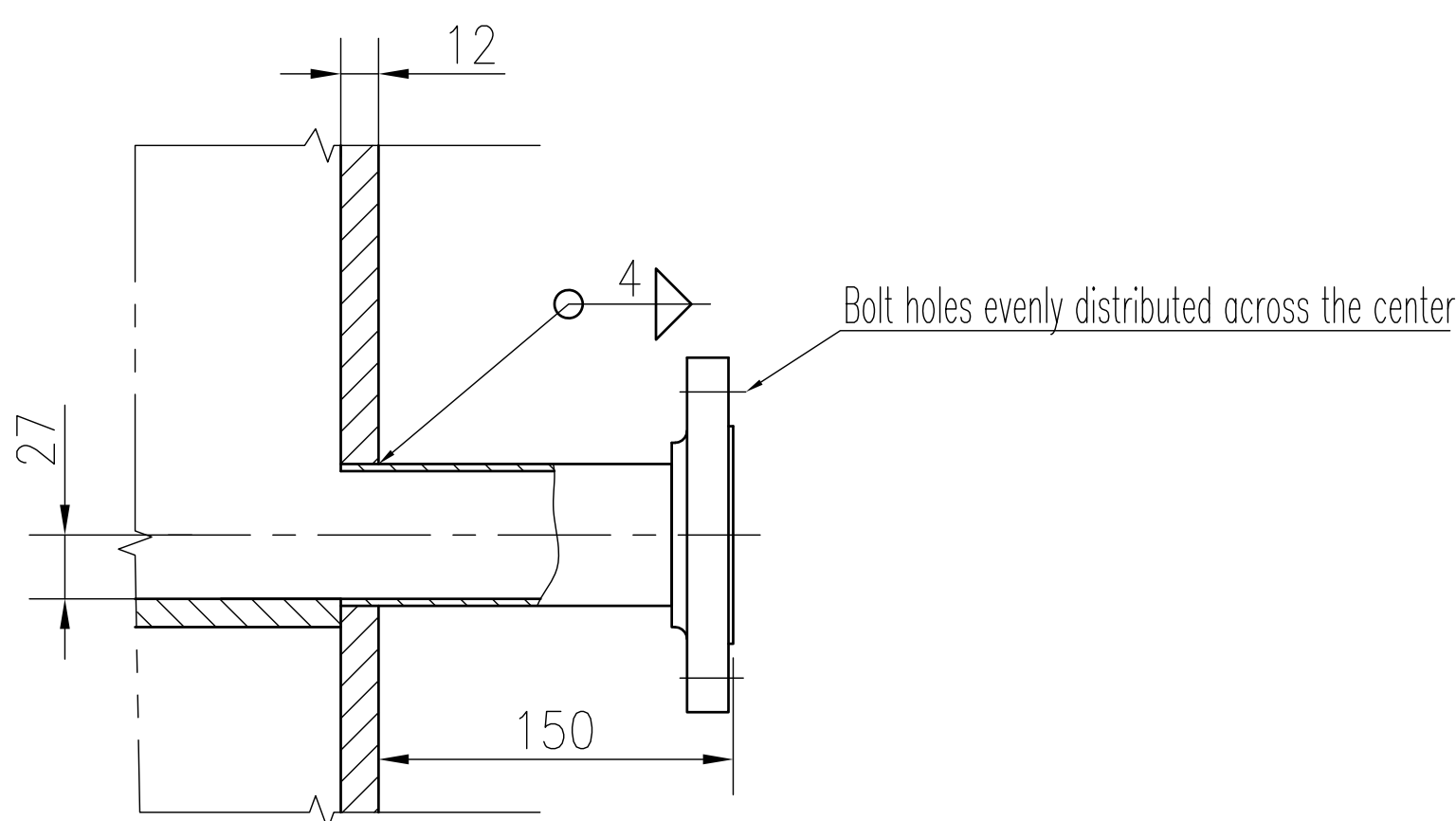
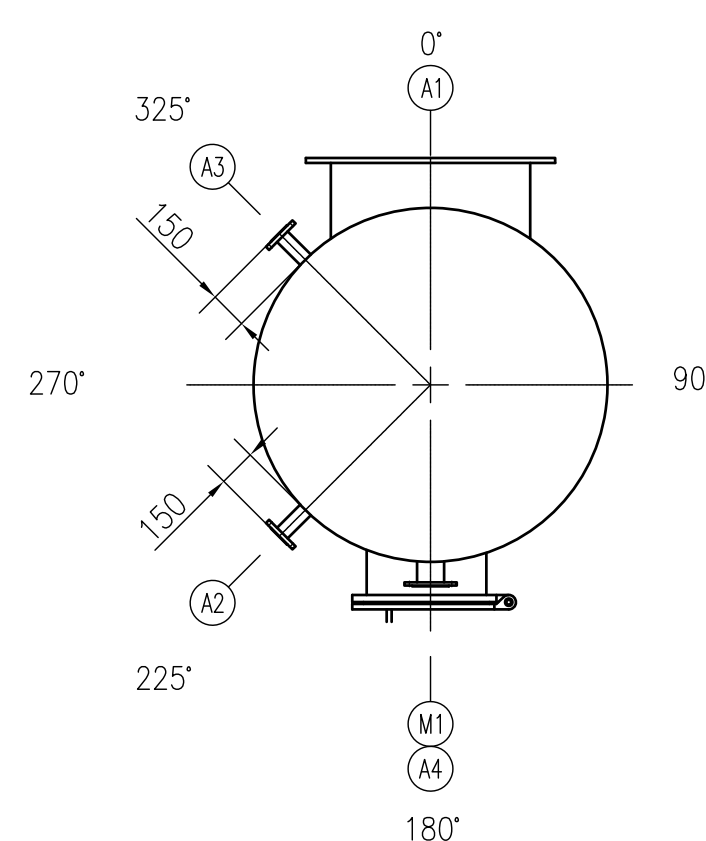
会签专业 SPECIALITY					
签署 SIGNATURE					
日期 DATE					



Detail Drawing of Nozzle N4
1:3



Orientation drawing of chimney nozzle

[illegible]